

LIGHTING RELAY PANEL SCHEDULE							17-Sep-04
RELAY PANEL NAME:		RPA (FIRST FLOOR, MASTER)					LOCATION:
DESCRIPTION:		16-CONTACTOR ENCLOSURE					ELECTRICAL ROOM 17B
MOUNTING: SURFACE							
CONTROL CIRCUIT: LIA-24							
RELAY #	RELAY VOLT	RELAY AMP	DESCRIPTION OF CONTROL	SWITCH	CIRCUIT	NOTES	
1	277	20	WHOM'S LOCKER	B2	HIA-3		
2	277	20	FAMILY CHANGING AREA	B2	HIA-1		
3	277	20	HEN'S LOCKER	B2	HIA-3		
4	277	20	SERVICE WALLPACKS		HIA-1	3	
5	277	20	POOL PORCH SKENCES		HIA-1	2	
6	277	20	EXTERIOR POOL WALL PACKS	B4	HIA-1		
7	277	20	EAST ENTRY		HIA-1	2	
8	277	20	LOCKER ENTRY	B2	HIA-3		
9	277	20	GYM HALL	B1	HIA-3	3	
10	277	20	PARKING LOT NIGHT LIGHTS		HIA-3	3	
11	277	20	PARKING LOT LIGHTS		HIA-11	2	
12	277	20	ENTRY/ENTRY DRIVE		HIA-3	2	
13	277	20	SPARE				
14	277	20	SPARE				
15	277	20	SPARE				
16	277	20	SPARE				

NOTES:  
 1. REFER TO LIGHTING CONTROL SWITCH SCHEDULE FOR MORE INFORMATION.  
 2. PHOTOCELL ON, ASTRONOMICAL TIMELOCK OFF CONTROL.  
 3. PHOTOCELL ON, PHOTOCELL OFF.

LIGHTING RELAY PANEL SCHEDULE							17-Sep-04
RELAY PANEL NAME:		RPB (FIRST FLOOR)					LOCATION:
DESCRIPTION:		16-CONTACTOR ENCLOSURE					ELECTRICAL ROOM 112
MOUNTING: SURFACE							
CONTROL CIRCUIT: LIB-43							
RELAY #	RELAY VOLT	RELAY AMP	DESCRIPTION OF CONTROL	SWITCH	CIRCUIT	NOTES	
1	277	20	LOWER LOBBY	B1	HIB-3		
2	277	20	RECEPTION AREA	B1	HIB-3		
3	277	20	PLAY AREA	B1	HIB-3		
4	277	20	ENTRY CANS	--	HIB-2	2	
5	277	20	PARKING LOT WALLPACKS	--	HIB-2	2	
6	277	20	WEST ENTRY	--	HIB-2	2	
7	277	20	SOUTH PORCH	--	HIB-2	2	
8	277	20	GYM EXTERIOR LIGHTING	--	HIB-2	2	
9	277	20	SPARE				
10	277	20	SPARE				
11	277	20	SPARE				
12	277	20	SPARE				
13	277	20	SPARE				
14	277	20	SPARE				
15	277	20	SPARE				
16	277	20	SPARE				

NOTES:  
 1. REFER TO LIGHTING CONTROL SWITCH SCHEDULE FOR MORE INFORMATION.  
 2. PHOTOCELL ON, ASTRONOMICAL TIMELOCK OFF CONTROL.  
 3. PHOTOCELL ON, PHOTOCELL OFF.

LIGHTING RELAY PANEL SCHEDULE							17-Sep-04
RELAY PANEL NAME:		RPC (MASTER, LIBRARY)					LOCATION:
DESCRIPTION:		16-CONTACTOR ENCLOSURE					STORAGE 127
MOUNTING: SURFACE							
CONTROL CIRCUIT: LIC-28							
RELAY #	RELAY VOLT	RELAY AMP	DESCRIPTION OF CONTROL	SWITCH	CIRCUIT	NOTES	
1	277	20	CHILDRENS AREA	B7	HIC-19		
2	277	20	CHILDRENS AREA	B7	HIC-19		
3	277	20	QUIET PERIMETER	B8	HIC-21		
4	277	20	QUIET 1	B8	HIC-21	3	
5	277	20	QUIET 2	B8	HIC-21	3	
6	277	20	LIBRARY LINEAR 1	B7	HIC-23	3	
7	277	20	LIBRARY LINEAR 2	B7	HIC-23	3	
8	277	20	LIBRARY CANS 1	B7	HIC-19	3	
9	277	20	LIBRARY CANS 2	B7	HIC-19	3	
10	277	20	LIBRARY PENDANTS 1	B7	HIC-23		
11	277	20	LIBRARY PENDANTS 2	B7	HIC-23		
12	277	20	SPARE				
13	277	20	SPARE				
14	277	20	SPARE				
15	277	20	SPARE				
16	277	20	SPARE				

NOTES:  
 1. REFER TO LIGHTING CONTROL SWITCH SCHEDULE FOR MORE INFORMATION.  
 2. PHOTOCELL ON, ASTRONOMICAL TIMELOCK OFF CONTROL.  
 3. PHOTOCELL PC3 SHALL OVERRIDE PUSHBUTTON.

LIGHTING RELAY PANEL SCHEDULE							17-Sep-04
RELAY PANEL NAME:		RPD (SECOND FLOOR)					LOCATION:
DESCRIPTION:		4-CONTACTOR ENCLOSURE					ELECTRICAL ROOM 206
MOUNTING: SURFACE							
CONTROL CIRCUIT: L2A-23							
RELAY #	RELAY VOLT	RELAY AMP	DESCRIPTION OF CONTROL	SWITCH	CIRCUIT	NOTES	
1	277	20	FITNESS DUAL	B3	H2A-10		
2	277	20	FITNESS DUAL	B3	H2A-12		
3	277	20	LOBBY PENDANTS	B1	H2A-12	3	
4	277	20	SPARE				

NOTES:  
 1. REFER TO LIGHTING CONTROL SWITCH SCHEDULE FOR MORE INFORMATION.  
 2. PHOTOCELL ON, ASTRONOMICAL TIMELOCK OFF CONTROL.  
 3. PHOTOCELL PC3 SHALL OVERRIDE PUSHBUTTON.

LIGHTING RELAY PANEL SCHEDULE							17-Sep-04
RELAY PANEL NAME:		RPP (POOL)					LOCATION:
DESCRIPTION:		4-CONTACTOR ENCLOSURE					ELECTRICAL ROOM 206
MOUNTING: SURFACE							
CONTROL CIRCUIT: L2A-23							
RELAY #	RELAY VOLT	RELAY AMP	DESCRIPTION OF CONTROL	SWITCH	CIRCUIT	NOTES	
1	277	20	LEISURE POOL 1	B4	H2A-11	3	
2	277	20	LEISURE POOL 2	B4	H2A-7	3	
3	277	20	LAP POOL 1	B4	H2A-9	4	
4	277	20	LAP POOL 2	B4	H2A-3	4	

NOTES:  
 1. REFER TO LIGHTING CONTROL SWITCH SCHEDULE FOR MORE INFORMATION.  
 2. PHOTOCELL ON, ASTRONOMICAL TIMELOCK OFF CONTROL.  
 3. PHOTOSENSOR PC1 SHALL OVERRIDE PUSHBUTTON.  
 4. PHOTOSENSOR PC2 SHALL OVERRIDE PUSHBUTTON.

EXTERIOR LUMINAIRE SCHEDULE										17-Sep-04
KEY	DESCRIPTION	MANUFACTURER CATALOG NUMBER	LAMP	VOLTS	MOUNTING INFORMATION	NOTES	MAX VA			
ED1	CERAMIC METAL HALIDE, 4' DOWNLIGHT ELEC BALLAST	LIGHTOLIER C400MRU-CCLW	C400MRU/830VPL	277	RECESSED		29			
EPI	METAL HALIDE, ROUND EXTERIOR POLE LIGHT TYPE 3 DIST. SINGLE HEAD, ELEC BALLAST	WIDELITE ALBRP-250-3H-277-SR-3.5/4	MVRS50/40R/PA	277	POLE +20'-0"	1,4	300			
EP2	METAL HALIDE, ROUND EXTERIOR POLE LIGHT TYPE 3 DIST. TWIN HEAD, ELEC BALLAST	WIDELITE ALBRP-250-3H-277-SR-2 AT 180	MVRS50/40R/PA	277	POLE +20'-0"	1,4	600			
EP3	METAL HALIDE, DECORATIVE ROUND POLE LIGHT, ELEC BALLAST	ARCHITECTURAL AREA LIGHTING SL VT-HB-70TH-AKT-TRABU	C400MRU/830VPL	277	POLE +18'-0"	2,4	90			
EP4	METAL HALIDE, DECORATIVE ROUND POLE LIGHT, ELEC BALLAST	ARCHITECTURAL AREA LIGHTING SL VT-HB-80TH-AKT-TRABU	C400MRU/830VPL	277	POLE +18'-0"	2,4	70			
ES1	COMPACT FLUORESCENT, SCOPF STYLE WALL SKENCE, ELEC BALLAST	INDERSA LIGHTING BAC-1023B-WHT-TL	F15DBX/830/ECO4P	277	SURFACE +8'-0"		18			
EN1	LED, ROUNDED WALL PACK ELEC BALLAST	GARDCO [2]-DR-FT-50LA-NH-UNIV-WP	FURNISHED	277	SURFACE +15'-0"		51			
EV0	LED, ROUNDED WALL PACK ELEC BALLAST	GARDCO [2]-DR-WT-50LA-NH-UNIV-WP	FURNISHED	277	SURFACE +12'-0"	3	51			
EV3	LED, ROUNDED WALL PACK ELEC BALLAST	GARDCO [2]-DR-WT-35LA-NH-UNIV-WP	FURNISHED	277	SURFACE +8'-0"		38			

MOUNTING ABBREVIATIONS:  
 AFF - ABOVE FINISHED FLOOR  
 BFC - BELOW FINISHED CEILING  
 COP - CENTER OF FIXTURE  
 RFD - RECESSED FIXTURE DEPTH

GENERAL NOTES (FOR ALL SCHEDULED LUMINAIRES):  
 A. PROVIDE ELECTRONIC BALLASTS WITH 10% THD FOR ALL FLUORESCENT AND CFL LUMINAIRES UNLESS OTHERWISE NOTED.  
 B. FLUORESCENT LUMINAIRES CONTROLLED BY OCCUPANCY SENSORS SHALL HAVE PROGRAMMED-START BALLASTS.

NOTES SPECIFIC TO SCHEDULED LUMINAIRES (REFER TO 'NOTES' COLUMN WITHIN SCHEDULE):  
 1. PROVIDE DESIGN 940 POLE #940-401-20  
 2. PROVIDE DESIGN 940 POLE #940-401-15.  
 3. MOUNTING HEIGHT AS INDICATED IN THIS SCHEDULE UNLESS NOTED OTHERWISE ON PLANS.  
 4. PROVIDE CONCRETE BASE THAT STICKS 6" ABOVE GROUND. SEE DETAIL 3 SH E3.0

OCCUPANCY SENSOR/ TIMER SCHEDULE			
KEY	DESCRIPTION	MFR. # CAT. NO.	Notes
1	PASSIVE INFRARED, DUAL LEVEL, WALL MOUNTED MOTION SENSOR	GREENGATE OSN-P-045-DTV-W	1
2	PASSIVE INFRARED, WALL MOUNTED MOTION SENSOR	GREENGATE OSN-P-045-MV-W	
3	ULTRASONIC, CEILING MOUNTED MOTION SENSOR SWITCH PACK	GREENGATE ODC-U-2000 SP20-MV	
4	PASSIVE INFRARED, CEILING MOUNTED MOTION SENSOR SWITCH PACK	GREENGATE OMC-P-2940-R SP20-MV	
5	TIMER SWITCH	GREENGATE TSN-MV	

NOTES:  
 1. ARRANGE DIP SWITCHES SO THAT MOTION SENSOR IS IN THE 'ENERGY SAVER MODE'.

LIGHTING CONTROL SWITCH SCHEDULE						9/17/2000
SWITCH #	BUTTON	FUNCTION	RELAY	ENGRAVING	NOTES	
1	1	ON/OFF	RPB-1	LOWER LOBBY		
	2	ON/OFF	RPD-3	UPPER LOBBY		
	3	ON/OFF	RPB-2	RECEPTION AREA		
	4	ON/OFF	RPB-3	PLAY AREA		
	5	ON/OFF	RPA-4	GYM HALL		
2	1	ON/OFF	RPA-6	LOCKER HALL		
	2	ON/OFF	RPA-1	HOMEN'S LOCKER		
	3	ON/OFF	RPA-2	FAMILY CHANGING		
	4	ON/OFF	RPA-3	HEN'S LOCKER		
3	1	ON/OFF	RPG-1	GYM 1		
	2	ON/OFF	RPG-2	GYM 2		
	3	ON/OFF	RPG-3	GYM 3		
	4	ON/OFF	RPD-1	FITNESS 1		
	5	ON/OFF	RPD-2	FITNESS 2		
4	1	ON/OFF	RPP-1	LEISURE POOL 1		
	2	ON/OFF	RPP-2	LEISURE POOL 2		
	3	ON/OFF	RPP-4	LAP POOL 1		
	4	ON/OFF	RPP-3	LAP POOL 2		
	5	ON/OFF	RPA-6	OUTDOOR POOL		
5	1	OFF	SEE NOTE 2	ALL OFF	2	
6	1	ON/OFF	--	CLEANING	1	
7	1	ON/OFF	RPC-6.0.10	LIBRARY 1		
	2	ON/OFF	RPC-7.5.11	LIBRARY 2		
	3	ON/OFF	RPC-1	CHILDRENS 1		
	4	ON/OFF	RPC-2	CHILDRENS 2		
	5	OFF	SEE NOTE 3	ALL OFF	3	
8	1	ON/OFF	RPC-4	QUIET 1		
	2	ON/OFF	RPC-5	QUIET 2		
	3	ON/OFF	RPC-5	QUIET 2		
9	1	ON/OFF	--	CLEANING	4	

NOTES:  
 1. OWNER TO SPECIFY LIGHTS NEEDED FOR CLEANING. FIELD PROGRAM SO THAT THIS KEYED SWITCH OVERRIDES THE AUTOMATIC TIME CLOCK SHUTOFF TO PROVIDE LIGHTING FOR AFTER HOURS CLEANING.  
 2. BUTTON SHALL TURN OFF ALL RECREATION CENTER INTERIOR LIGHTING.  
 3. BUTTON SHALL TURN OFF ALL LIBRARY INTERIOR LIGHTING.  
 4. OWNER TO SPECIFY LIGHTS NEEDED FOR CLEANING. FIELD PROGRAM SO THAT THIS KEYED SWITCH OVERRIDES THE AUTOMATIC TIME CLOCK SHUTOFF TO PROVIDE LIGHTING FOR AFTER HOURS CLEANING.

LIGHTING RELAY PANEL SCHEDULE							17-Sep-04
RELAY PANEL NAME:		RPG (GYM)					LOCATION:
DESCRIPTION:		4-CONTACTOR ENCLOSURE					ELECTRICAL ROOM 206
MOUNTING: SURFACE							
CONTROL CIRCUIT: L2A-23							
RELAY #	RELAY VOLT	RELAY AMP	DESCRIPTION OF CONTROL	SWITCH	CIRCUIT	NOTES	
1	277	20	GYM	B3	H2A-1	3	
2	277	20	GYM	B3	H2A-3	3	
3	277	20	GYM	B3	H2A-9		
4	277	20	SPARE				

NOTES:  
 1. REFER TO LIGHTING CONTROL SWITCH SCHEDULE FOR MORE INFORMATION.  
 2. PHOTOCELL ON, ASTRONOMICAL TIMELOCK OFF CONTROL.  
 3. PROGRAM RELAY SO THAT MONDAY THRU THURSDAY, SUNRISE TO SUNSET, THESE TWO RELAYS ARE CONTROLLED BY PHOTOSENSOR FOR. AFTER SUNSET THESE RELAYS SHALL BE CONTROLLED MANUALLY BY SWITCH AT THE FRONT DESK. FRIDAY THRU SUNDAY THE PHOTOSENSOR SHALL BE DISABLED AND THE LIGHTS SHALL BE CONTROLLED AT THE FRONT DESK AT ALL TIMES.

LUMINAIRE SCHEDULE										17-Sep-04
KEY	DESCRIPTION	MANUFACTURER CATALOG NUMBER	LAMP	VOLTS	MOUNTING INFORMATION	NOTES	MAX VA			
D1	COMPACT FLUORESCENT, 6' OPEN DOWNLIGHT, ELEC BALLAST	LIGHTOLIER 8031 CLN 56132B U	F26TBX/830/A/ECO	277	RECESSED		31			
D1A	COMPACT FLUORESCENT, 6' OPEN DOWNLIGHT, ELEC BALLAST	LIGHTOLIER 101P2642CU-101H4CD	F32TBX/830/A/ECO	277	RECESSED		36			
D2	COMPACT FLUORESCENT, 4' LENSED DIMMER DIMMING, ELEC BALLAST	LIGHTOLIER 2002GL-2002FB	F18TBX/830/A/ECO	277	RECESSED		24			
D3	COMPACT FLUORESCENT, 6' OPEN DOWNLIGHT WITH DROP GLASS, ELEC BALLAST	LIGHTOLIER 8031CLN DS 56132B U	F32TBX/830/A/ECO	277	RECESSED		31			
D5	COMPACT FLUORESCENT, 6' OPEN DOWNLIGHT, 0-10V DIM BALLAST	LIGHTOLIER 8031 CLN 56132B-JUM7	F32TBX/830/A/ECO	277	RECESSED		36			
F1	FLUORESCENT, 2'X4' TROFFER, DUAL LEVEL, ELEC BALLAST	LIGHTOLIER HP902GLR228 UNV VY	F28W/TS/830/ECO	277	RECESSED GRID		54			
F1A	FLUORESCENT, 2'X4' TROFFER ELEC BALLAST	LIGHTOLIER HP902GLR228 UNV PG	F28W/TS/830/ECO	277	RECESSED GRID		54			
F1B	FLUORESCENT, 2'X4' TROFFER DIMMING BALLAST	LIGHTOLIER HP902GLR228 UNV	F28W/TS/830/ECO	277	RECESSED GRID	2	70			
F2A	FLUORESCENT, 32' DIRECT/INDIRECT FIXTURE, DIMMING, ELEC BALLAST	LEDALITE 7306-F02-1-G-32'-2-E-W-A3-36'-DS	F28W/TS/830/ECO	277	PENDANT 11'-0" AFF TO BOF	3,9	472			
F3	FLUORESCENT, 28' DIRECT/INDIRECT FIXTURE, DUAL LEVEL, ELEC BALLAST	LEDALITE 7406-F02-Q-G-28'-2-E-W-A3-60'	F28W/TS/830/ECO	277	PENDANT 11'-0" AFF TO BOF		413			
F4	FLUORESCENT, 4' STRIP LIGHT ELEC BALLAST	NALITE NS1215-277	F28W/TS/830/ECO	277	SURFACE		35			
F4A	FLUORESCENT, 4' STRIP LIGHT WITH WIRE GUARD, ELEC BALLAST	NALITE NS1215-277-WG	F28W/TS/830/ECO	277	SURFACE		35			
F5	FLUORESCENT, 3' STRIP ELEC BALLAST	NALITE NS1215-277	F28W/TS/830/ECO	277	SURFACE		25			
F6	FLUORESCENT, 6X LAMP HIGHBAY, LENS WIRE GUARD, ELEC BALLAST	NALITE TH184T300-CL-WG-ML5-3C	F54W/TS/830/ECO	277	PENDANT 25'-0" AFF TO BOF	1,10	351			
F7	FLUORESCENT, 32' DIRECT/INDIRECT FIXTURE, DUAL LEVEL, ELEC BALLAST	LEDALITE 7406-F02-Q-G-32'-2-E-W-A3-60'	F28W/TS/830/ECO	277	PENDANT 11'-0" AFF TO BOF		472			
F8	FLUORESCENT, 2'X2' TROFFER DUAL LEVEL, ELEC BALLAST	LIGHTOLIER HP902GLR214 UNV VY	F14W/TS/830/ECO	277	RECESSED		32			
F9	FLUORESCENT, 24' TROFFER, GLASS WINGS, ELEC BALLAST	LIGHTOLIER OCE2GL0824UNVPG	F28W/TS/830/ECO	277	RECESSED GRID		120			
F10	FLUORESCENT, 8' DIRECT/INDIRECT FIXTURE, DUAL LEVEL, ELEC BALLAST	LEDALITE 7406-F02-Q-N-8'-2-E-W-A3-12'	F28W/TS/830/ECO	277	PENDANT 12' PL		118			
F11	FLUORESCENT, 16' DIRECT/INDIRECT FIXTURE, DIMMING, ELEC BALLAST	LEDALITE 7506-F02-Q-N-16'-7-2-E-W-A3-30'	F28W/TS/830/ECO	277	PENDANT 12' PL	5	236			

OWNER EQUIPMENT SCHEDULE											17-Sep-04
KEY	EQUIPMENT	LOAD (VA)	VOLTS	PH	BRANCH CIRCUIT CONDUCTORS	COND.	DISCONNECT SWITCH	RECEP	CIRCUIT BREAKER	NOTES	
ADO	AUTOMATIC DOOR 1/4 HP	696	120	1	2#12, 1#12G	1/2"	THERMAL OL SWITCH		20A/1P	5	
BKBD	BACKBOARD MOTOR 1/2 HP	1176	120	1	2#12, 1#12G	1/2"	THERMAL OL SWITCH		20A/1P		
BKSR	BOOK SORTER	1176	120	1	2#12, 1#12G	1/2"	THERMAL OL SWITCH		20A/1P		
CLNR	POOL CLEANER	2400	120	1	2#12, 1#12G	1/2"		L5-20R	20A/1P	4	
COMP	COMPUTER	400	120	1	2#12, 1#12G	1/2"		5-20R	20A/1P		
COPY	COPY MACHINE	1500	120	1	2#12, 1#12G	1/2"		5-20R	20A/1P		
CURT	CURTAIN MOTOR	1176	120	1	2#12, 1#12G	1/2"	THERMAL OL SWITCH		20A/1P		
DSCR	DROP SCREEN	696	120	1	2#12, 1#12G	1/2"	TOGGLE		20A/1P		
DRY	DRYER	5000	208	1	3#10, 1#10G	3/4"		14-30R	30A/2P		
DN	DISHWASHER	1000	120	1	2#12, 1#12G	1/2"		5-20R	20A/1P		
EXR	EXERCISE EQUIPMENT	1500	120	1	2#12, 1#12G	1/2"		5-20R	20A/1P		
FAN	HALL MOUNTED FAN	250	120	1	2#12, 1#12G	1/2"		5-20R	20A/1P		
FIRE	FIREPLACE IGNITION	120	120	1	2#12, 1#12G	1/2"	TOGGLE		20A/1P		
HAND	HAND DRYER	1920	120	1	2#12, 1#12G	1/2"	FURNISHED W/ UNIT		20A/1P		
LAP	LAP TIMER	250	120	1	2#12, 1#12G	1/2"	FURNISHED W/ UNIT		20A/1P	2	
MHW	MICROWAVE	1500	120	1	2#12, 1#12G	1/2"		5-20R	20A/1P		
PRINT	PRINTER	500	120	1	2#12, 1#12G	1/2"		5-20R	20A/1P		
PROJ	PROJECTOR	1500	120	1	2#12, 1#12G	1/2"		5-20R	20A/1P		
REF	REFRIGERATOR	1000	120	1	2#12, 1#12G	1/2"		5-20R	20A/1P		
RNG	RANGE	5000	208	1	3#8, 1#10G	3/4"		14-50R	50A/3P		
SCBD	SCOREBOARD	1500	120	1	2#12, 1#12G	1/2"	TOGGLE SWITCH		20A/1P		
SCBK	LIBRARY SELF CHECKOUT	500	120	1	2#12, 1#12G	1/2"		5-20R	20A/1P		
SND	SOUND EQUIPMENT	1000	120	1	2#12, 1#12G	1/2"		5-20R	20A/1P		
SUIT	SUITEMATE	1500	120	1	2#12, 1#12G	1/2"	FURNISHED W/ UNIT		20A/1P		
TV	TELEVISION	250	120	1	2#12, 1#12G	1/2"		5-20R	20A/1P		
WASH	WASHER	1500	120	1	2#12, 1#12G	1/2"		5-20R	20A/1P		
WSC1	WINDOW SCREEN	500	120	1	2#12, 1#12G	1/2"	KEYED SWITCH		20A/1P	3	
WSC2	WINDOW SCREEN	100	120	1	2#12, 1#12G	1/2"	KEYED SWITCH		20A/1P	3	
VEND	VENDING MACHINE	1500	120	1	2#12, 1#12G	1/2"		5-20R	20A/1P		

GENERAL NOTES (FOR ALL SCHEDULED EQUIPMENT):

A. FIELD VERIFY ALL EQUIPMENT LOADS, VOLTAGES, AND RECOMMENDED OCP SIZING PRIOR TO ENERGIZING CIRCUIT.

NOTES SPECIFIC TO SCHEDULED EQUIPMENT (REFER TO NOTES COLUMN WITHIN SCHEDULE):

1. PROVIDE PUSHBUTTONS TO CONTROL GARAGE DOORS. INSTALL PER MANUFACTURERS INSTALLATION INSTRUCTIONS.

2. VERIFY MOUNTING HEIGHT OF JUNCTION BOX FOR LAP TIMER POWER WITH ARCHITECT PRIOR TO ROUGH-IN.

3. PROVIDE JUNCTION BOX IN TOP WINDOW JAM. COORDINATE JUNCTION BOX LOCATION WITH SHADE PROVISIONS PRIOR TO ROUGH-IN. INSTALL POWER PER MANUFACTURERS INSTALLATION INSTRUCTIONS.

4. ONLY ONE CLEANER CAN BE PLUGGED IN AT A TIME IN THE NATATORIUM.

5. PROVIDE 1/2" CONDUITS BETWEEN PUSHBUTTONS AND DOOR POWER. INSTALL PER MANUFACTURERS INSTALLATION INSTRUCTIONS.

MECHANICAL AND PLUMBING EQUIPMENT SCHEDULE											17-Sep-04
KEY	EQUIPMENT	LOAD (VA)	VOLTS	PH	BRANCH CIRCUIT CONDUCTORS	COND.	DISCONNECT SWITCH	FUSE	CIRCUIT BREAKER	CIRCUIT	NOTES
AC	AC UNIT 17.3 FLA	104	208	1	2#12, 1#12G	1/2"	THERMAL OL SWITCH		15A/2P	LIC-39,41	
AC	AC UNIT 0.5 FLA	104	208	1	2#12, 1#12G	1/2"	THERMAL OL SWITCH		15A/2P	LIA-18,20	
AC	AC UNIT 0.5 FLA	104	208	1	2#12, 1#12G	1/2"	THERMAL OL SWITCH		15A/2P	LPA-26,28	
AC	AC UNIT 0.5 FLA	104	208	1	2#12, 1#12G	1/2"	THERMAL OL SWITCH		15A/2P	LIA-28,30	
CF	LARGE SCALE FAN 1.5HP	2494	480	3	3#12, 1#12G	1/2"	30A/3P		15A/3P	H2M-26,28,30	3
CF	LARGE SCALE FAN 1.5HP	2494	480	3	3#12, 1#12G	1/2"	30A/3P		15A/3P	H2M-19,15,17	3
CU	CONDENSING UNIT 17.3 FLA	3548	208	1	2#10, 1#10G	1/2"	THERMAL OL SWITCH		35A/2P	LIC-31,33	
CU	CONDENSING UNIT 17.3 FLA	3548	208	1	2#10, 1#10G	1/2"	THERMAL OL SWITCH		35A/2P	L2A-49,51	
CU	CONDENSING UNIT 17.3 FLA	3548	208	1	2#10, 1#10G	1/2"	THERMAL OL SWITCH		35A/2P	L2A-53,55	
CU	CONDENSING UNIT 17.3 FLA	3548	208	1	2#10, 1#10G	1/2"	THERMAL OL SWITCH		35A/2P	L2A-57,59	
CUH	CABINET UNIT HEATER 12.7 MCA	10599	480	3	4#12, 1#12G	1/2"	PROVIDED W/ UNIT		20A/3P	HIM-14,16,18	
CUH	CABINET UNIT HEATER 7.3 MCA	6069	480	3	4#12, 1#12G	1/2"	PROVIDED W/ UNIT		15A/3P	HIMB-1,3,5	
CUH	CABINET UNIT HEATER 12.7 MCA	10599	480	3	4#12, 1#12G	1/2"	PROVIDED W/ UNIT		20A/3P	HIM-38,35,37	
EF	EXHAUST FAN, LKR RMB 1.0 HP	2216	277	1	2#12, 1#12G	1/2"	THERMAL OL SWITCH		20A/1P	H2M-25	
EF	EXHAUST FAN, RESTROOMS 1/4 HP	696	120	1	2#12, 1#12G	1/2"	THERMAL OL SWITCH		20A/1P	L2A-35	
EF	EXHAUST FAN, RESTROOM 48W	48	120	1	2#12, 1#12G	1/2"	THERMAL OL SWITCH		20A/1P	LIC-1	1
EF	EXHAUST FAN, RESTROOM 115W	115	120	1	2#12, 1#12G	1/2"	THERMAL OL SWITCH		20A/1P	L1B-38	1
EF	EXHAUST FAN, KITCHEN 1/4 HP	696	120	1	2#12, 1#12G	1/2"	THERMAL OL SWITCH		20A/1P	L2A-35	2
EF	EXHAUST FAN, SURGE 1/4 HP	696	120	1	2#12, 1#12G	1/2"	THERMAL OL SWITCH		20A/1P	L2A-25	
EF	EXHAUST FAN, SURGE 1/4 HP	696	120	1	2#12, 1#12G	1/2"	THERMAL OL SWITCH		20A/1P	L2A-25	
EF	EXHAUST FAN, JAN 204 80W	80	120	1	2#12, 1#12G	1/2"	THERMAL OL SWITCH		20A/1P	L2A-1	
EF	EXHAUST FAN, ELEV. MECH 1/4 HP	696	120	1	2#12, 1#12G	1/2"	THERMAL OL SWITCH		20A/1P	L2A-31	
EF	EXHAUST FAN, ELEC 173 1/4 HP	696	120	1	2#12, 1#12G	1/2"	THERMAL OL SWITCH		20A/1P	L2A-29	
EF	EXHAUST FAN, ELEC 112 1/4 HP	696	120	1	2#12, 1#12G	1/2"	THERMAL OL SWITCH		20A/1P	L2A-35	
EF	EXHAUST FAN, ELEC 206 1/4 HP	696	120	1	2#12, 1#12G	1/2"	THERMAL OL SWITCH		20A/1P	L2A-31	
EW	ELECTRIC WATER COOLER 1/3 HP	612	120	1	2#12, 1#12G	1/2"	NEMA 5-20R		20A/1P	SEE PLANS	5
GDU	GARBAGE DISPOSER 1/2 HP	1176	120	1	2#12, 1#12G	1/2"	NEMA 5-20R		20A/1P	SEE PLANS	
GH	GAS WATER HEATER 1.0 FLA, 1/3 HP	120	120	1	2#12, 1#12G	1/2"	THERMAL OL SWITCH		20A/1P	LIA-2	4
GH	GAS WATER HEATER 1.0 FLA, 1/3 HP	864	120	1	2#12, 1#12G	1/2"	THERMAL OL SWITCH		20A/1P	LIA-4	
GH	GAS WATER HEATER 1.0 FLA, 1/3 HP	864	120	1	2#12, 1#12G	1/2"	THERMAL OL SWITCH		20A/1P	LIA-6	4
GH	GAS WATER HEATER 1.0 FLA, 1/3 HP	864	120	1	2#12, 1#12G	1/2"	THERMAL OL SWITCH		20A/1P	LIA-10	
PDU	POOL DEHAUMID UNIT 90.7 MCA	75372	480	3	4#12, 1#12G	1-1/4"	100A/3P		110A/3P	H2M-7,9,11	
PP	HOT WATER CIRC PUMP 1/8 HP	528	120	1	2#12, 1#12G	1/2"	THERMAL OL SWITCH		20A/1P	LIA-8	
RTU	ROOF TOP UNIT 78.1 MCA	65284	480	3	4#18, 1#18G	1-1/4"	100A/3P		100A/3P	H2M-1,3,5	
RTU	ROOF TOP UNIT 124.5 MCA	109507	480	3	4-1/0, 1#16G	2"	200A/3P		150A/3P	H2M-2,4,6	
RTU	ROOF TOP UNIT 61.0 MCA	50649	480	3	4#18, 1#18G	1-1/4"	100A/3P		70A/3P	H2M-8,10,12	
RTU	ROOF TOP UNIT 55.0 MCA	45726	480	3	4#18, 1#18G	1-1/4"	100A/3P		70A/3P	HIC-1,3,5	
SE	SEWAGE EJECTOR CONTROL PANEL, 1.0 HP	1745	480	3	4#12, 1#12G	1/2"	60A/3P		15A/3P	HIM-7,9,11	
SP	SUMP PUMP 1/2 HP	1176	120	1	2#12, 1#12G	1/2"	THERMAL OL SWITCH		20A/1P	L1B-47	
SP	SUMP PUMPS CONTROL PANEL, 2.0 HP	2825	480	3	4#12, 1#12G	1/2"	30A/3P		15A/3P	HIM-19,15,17	
UH	UNIT HEATER 12.1 FLA	10060	480	3	3#12, 1#12G	1/2"	PROVIDED W/ UNIT		20A/3P	HIM-1,3,5	
UH	UNIT HEATER 12.1 FLA	10060	480	3	3#12, 1#12G	1/2"	PROVIDED W/ UNIT		20A/3P	HIM-2,4,6	
UH	UNIT HEATER 11.9 FLA	3296	277	1	2#12, 1#12G	1/2"	PROVIDED W/ UNIT		20A/1P	HIM-21	
UH	UNIT HEATER 11.9 FLA	3296	277	1	2#12, 1#12G	1/2"	PROVIDED W/ UNIT		20A/1P	HIM-19	
UH	UNIT HEATER 6.1 FLA	5071	480	3	3#12, 1#12G	1/2"	PROVIDED W/ UNIT		15A/3P	HIMB-2,4,6	
VAV	VARIABLE AIR VOLUME 2-1 7.0KN	7000	480	3	3#12, 1#12G	1/2"	PROVIDED W/ UNIT		15A/3P	HIM-8,10,12	
VAV	VARIABLE AIR VOLUME 2-2 6.0KN	6000	480	1	2#12, 1#12G	1/2"	PROVIDED W/ UNIT		20A/2P	HIM-22,24	
VAV	VARIABLE AIR VOLUME 2-3 4.0KN	4000	277	1	2#12, 1#12G	1/2"	PROVIDED W/ UNIT		20A/1P	HIM-25	
VAV	VARIABLE AIR VOLUME 2-4 6.0KN	6000	480	1	2#12, 1#12G	1/2"	PROVIDED W/ UNIT		20A/2P	HIM-27,29	
VAV	VARIABLE AIR VOLUME 2-5 4.0KN	4000	277	1	2#12, 1#12G	1/2"	PROVIDED W/ UNIT		20A/1P	HIM-23	
VAV	VARIABLE AIR VOLUME 2-6 7.0KN	7000	480	3	3#12, 1#12G	1/2"	PROVIDED W/ UNIT		15A/3P	HIMB-38,40,42	
VAV	VARIABLE AIR VOLUME 2-7 2.0KN	2000	277	1	2#12, 1#12G	1/2"	PROVIDED W/ UNIT		20A/1P	HIMB-28	
VAV	VARIABLE AIR VOLUME 2-8 1.0KN	1000	277	1	2#12, 1#12G	1/2"	PROVIDED W/ UNIT		20A/1P	HIMB-39	
VAV	VARIABLE AIR VOLUME 2-9 5.0KN	5000	480	1	2#12, 1#12G	1/2"	PROVIDED W/ UNIT		15A/2P	HIMB-34,36	
VAV	VARIABLE AIR VOLUME 2-10 3.0KN	3000	277	1	2#12, 1#12G	1/2"	PROVIDED W/ UNIT		20A/1P	HIMB-30	
VAV	VARIABLE AIR VOLUME 2-11 20.0KN	20000	480	3	3#8, 1#10G	3/4"	PROVIDED W/ UNIT		35A/3P	HIMB-7,9,11	
VAV	VARIABLE AIR VOLUME 2-12 7.0KN	7000	480	3	3#12, 1#12G	1/2"	PROVIDED W/ UNIT		15A/3P	HIMB-25,27,29	
VAV	VARIABLE AIR VOLUME 2-13 18.0KN	18000	480	3	3#10, 1#10G	1/2"	PROVIDED W/ UNIT		30A/3P	H2M-14,16,18	
VAV	VARIABLE AIR VOLUME 2-14 17.0KN	17000	480	3	3#10, 1#10G	1/2"	PROVIDED W/ UNIT		30A/3P	H2M-19,21,23	
VAV	VARIABLE AIR VOLUME 3-1 8.0KN	8000	480	3	3#12, 1#12G	1/2"	PROVIDED W/ UNIT		15A/3P	HIMB-8,10,12	
VAV	VARIABLE AIR VOLUME 3-2 8.0KN	8000	480	3	3#12, 1#12G	1/2"	PROVIDED W/ UNIT		15A/3P	HIMB-19,15,17	
VAV	VARIABLE AIR VOLUME 3-3 9.0KN	9000	480	3	3#12, 1#12G	1/2"	PROVIDED W/ UNIT		15A/3P	HIMB-14,16,18	
VAV	VARIABLE AIR VOLUME 3-4 4.0KN	4000	277	1	2#12G, 1#12G	1/2"	PROVIDED W/ UNIT		20A/1P	HIMB-31	
VAV	VARIABLE AIR VOLUME 3-5 18.0KN	18000	480	3	3#10, 1#10G	1/2"	PROVIDED W/ UNIT		30A/3P	HIMB-1	



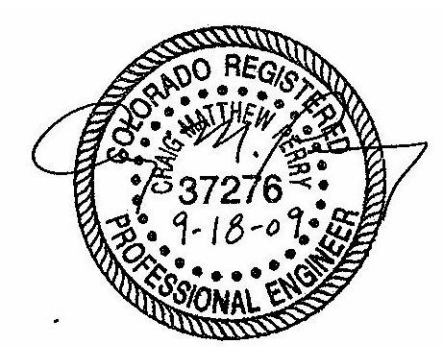
PANEL LIB		PROJECT: Fruta Community Center		JOB NUMBER: 29005.00		17-Sep-03					
LOCATION: ELEC 112		COMMENTS:									
FED FROM: HIB VIA TIB											
VOLTAGE L-L: 208 V		BUS RATING: 250 AMPS		O.C. PROTECTION: 250 A/3P M.C.B.							
VOLTAGE L-G: 120 V		O.C. PROTECTION: 10,000 A.I.C. FULLY RATED									
TYPE: 3PH/4W											
MOUNTING: SURFACE											
CIR NO.	CIRCUIT BREAKER	LOAD VA	LOAD TYPE	LOAD SERVED	BUS	LOAD SERVED	LOAD TYPE	LOAD VA	LOAD POLES	RATING	CIR NO.
1	20	1	1080	R	R-ELEC LOUNGE	A	R-VENDING	E	1500	1	20
3	20	1	496	E	EAC	B	R-VENDING	E	1500	1	20
5	20	1	192	LM	M-AUTO DOOR	C	R-HENS RR	R	180	1	20
7	20	1	360	R	R-SENIOR COUNTER	A	R-HOMENS RR	R	180	1	20
9	20	1	180	R	R-SENIOR COUNTER	B	R-LOUNGE	E	680	1	20
11	20	1	1150	E	R-SENIOR CENTER	C	R-RECEPTION	R	360	1	20
13	20	1	180	R	R-KITCHEN	A	R-RECEPTION	R	360	1	20
15	20	1	180	R	R-KITCHEN	B	R-RECEPTION	R	360	1	20
17	20	1	180	R	R-KITCHEN	C	R-RECEPTION	R	360	1	20
19	50	2	2500	KE	R-RANGE	A	R-GYM	R	1440	1	20
21	20	1	2500	KE	R-KITCHEN	B	R-GYM BLEACHERS	R	540	1	20
23	20	1	180	R	R-KITCHEN	C	E-SCOREBOARD	E	1500	1	20
25	20	1	540	R	R-KITCHEN STORAGE	A	R-ELEV PIT	L	216	1	20
27	20	1	1000	KE	E-REFRIGERATOR	B	R-HORK AREA	E	1540	1	20
29	20	1	1500	KE	R-MICROWAVE	C	R-COPY MACHINE	E	1500	1	20
31	20	1	1000	KE	R-DISHWASHER	A	R-CHILD HORK AREA	E	1520	1	20
33	20	1	1176	M	TI-DISPOSER	B	R-HORK AREA	E	1340	1	20
35	20	1	1080	R	R-MULTI ROOM	C	R-OFFICE 154, CHLD	E	1190	1	20
37	20	1	720	R	R-MULTI ROOM	A	R-PLAY, CHLD, STG, RRR	E	1150	1	20
39	20	1	1260	R	R-MULTI ROOM	B	R-TELECOM	R	360	1	20
41	20	1	360	R	R-MULTI ROOM COUNTER	C	R-OFFICE 153, PARTY	E	1200	1	20
43	20	1	100	E	RELAY PANEL	A	R-OFFICE 152, STG	E	1340	1	20
45	20	1	1000	E	R-REFRIGERATOR	B	R-BREAK ROOM	R	360	1	20
47	20	1	1176	M	SUMP PUMP SP-1	C	E-DISHWASHER	E	1000	1	20
49	20	1	696	M	M-DROP SCREEN	A	M-GDU	M	1176	1	20
51	20	1	500	E	E-FIRE ALARM PANEL	B	E-REFRIG	E	1000	1	20
53	20	1	1500	E	R-PROJECTOR	C	R-BREAK COUNTER	R	180	1	20
55	20	1	1000	E	R-SOUND EQUIPMENT	A	R-BREAK COUNTER	R	360	1	20
57	20	1	1000	E	SPARE	B	R-AUTO DOOR	M	1798	1	20
59	20	1	1000	E	SPARE	C	R-PLAY, PARTY	R	540	1	20
61	20	1	1000	E	SPARE	A	M-GDU	M	1176	1	20
63	20	1	1000	E	SPARE	B	E-SCOREBOARD	E	1500	1	20
65	20	1	1000	E	SPARE	C	M-CHILD GDU	M	1176	1	20
67	20	1	1000	E	SPARE	A	R-CHILD COUNTER	R	360	1	20
69	20	1	1000	E	SPARE	B	SPARE	SPARE	SPARE	1	20
71	20	1	1000	E	SPARE	C	SPARE	SPARE	SPARE	1	20
73	20	1	1000	E	SPARE	A	SPARE	SPARE	SPARE	1	20
75	20	1	1000	E	SPARE	B	SPARE	SPARE	SPARE	1	20
77	20	1	1000	E	SPARE	C	SPARE	SPARE	SPARE	1	20
79	20	1	1000	E	SPARE	A	SPARE	SPARE	SPARE	1	20
81	20	1	1000	E	SPARE	B	SPARE	SPARE	SPARE	1	20
83	20	1	1000	E	SPARE	C	SPARE	SPARE	SPARE	1	20

LOAD TYPE DESCRIPTIONS		L - LIGHTING, H - HEAT, R - RECEPTACLE, LM - LARGEST MOTOR, M - MOTOR, E - EQUIPMENT, KE - KITCHEN EQUIPMENT, S - SUBFEED	
TOTAL CONNECTED LOADS		PANEL (FEEDER) DEMAND LOAD CALCULATIONS	
PHASE A	PHASE B	PHASE C	PANEL
18,957	18,844	17,984	55,885
RECEPTACLE		CONTINUOUS (L OR H)	
180		216 x 1.25 = 274 VA	
PHASE BALANCING (BASED ON CONNECTED LOADS ABOVE)			
FIRST 10,000 VA:		10,000 x 1.00 = 10,000 VA	
ADDITIONAL VA:		2,420 x 0.50 = 1,210 VA	
TOTAL DEMANDED LOADS		11,210 VA	
LARGEST MOTOR		1000	
MOTOR		24,050 x 1.00 = 24,050 VA	
EQUIPMENT		25,306 x 1.00 = 25,306 VA	
KITCHEN EQUIPMENT		8,500 x 0.80 = 6,800 VA	
PIECES OF EQUIPMENT: 4			
SUBFEED		0 x 1.00 = 0 VA	
TOTAL A		18,957	
TOTAL B		18,844	
TOTAL C		17,984	

PANEL LIC		PROJECT: Fruta Community Center		JOB NUMBER: 29005.00		17-Sep-03					
LOCATION: STORAGE 127		COMMENTS:									
FED FROM: HIC VIA TIC											
VOLTAGE L-L: 208 V		BUS RATING: 200 AMPS		O.C. PROTECTION: 150 A/3P M.C.B.							
VOLTAGE L-G: 120 V		O.C. PROTECTION: 10,000 A.I.C. FULLY RATED									
TYPE: 3PH/4W											
MOUNTING: SURFACE											
CIR NO.	CIRCUIT BREAKER	LOAD VA	LOAD TYPE	LOAD SERVED	BUS	LOAD SERVED	LOAD TYPE	LOAD VA	LOAD POLES	RATING	CIR NO.
1	20	1	900	E	R-ELEC, STG, RR, CHLD	A	R-LIBRARY, EXT, STG	E	1080	1	20
3	20	1	360	R	R-TELE/COM	B	R-BOOKSORTER	M	1176	1	20
5	20	1	360	R	R-TELE/COM	C	R-OFFICE	E	1200	1	20
7	20	1	360	R	R-CHECKOUT	A	R-OFFICE, READ, LIBRARY	E	1340	1	20
9	20	1	1500	R	R-COPY MACHINE	B	R-BREAK ROOM	R	360	1	20
11	20	1	1000	R	R-SELF CHECKOUT	C	R-GARBAGE DISPOSER	LM	1176	1	20
13	20	1	1200	E	R-COMPUTER STATION	A	R-READING ROOM	R	540	1	20
15	20	1	1200	E	R-COMPUTER STATION	B	R-READING FLOOR	R	1080	1	20
17	20	1	750	R	E-PROGRAM AREA	C	R-TEEN COMPUTER	E	1350	1	20
19	20	1	540	R	R-PROGRAM COUNTER	A	R-TEEN FLOOR	R	540	1	20
21	20	1	900	R	R-STUDY LIBRARY	B	R-LIBRARY FLOOR	R	720	1	20
23	20	1	1600	E	R-CHILD COPY	C	R-LIBRARY FLOOR	R	360	1	20
25	20	1	500	E	R-PRINTER	A	E-FIREPLACE, BUZZER	E	240	1	20
27	20	1	500	E	R-PRINTER	B	E-RELAY PANEL	E	240	1	20
29	20	1	1080	R	R-CHILDRENS LIBRARY	C	R-LIBRARY, TV	E	790	1	20
31	35	2	1798	LM	CU-1	A	R-TEEN COMPUTERS	E	800	1	20
33	20	1	1000	E	SPARE	B	SPARE	SPARE	SPARE	1	20
35	20	1	1000	E	SPARE	C	SPARE	SPARE	SPARE	1	20
37	20	1	52	M	AC-1	A	SPARE	SPARE	SPARE	1	20
39	15	2	52	M	AC-1	C	SPARE	SPARE	SPARE	1	20

LOAD TYPE DESCRIPTIONS		L - LIGHTING, H - HEAT, R - RECEPTACLE, LM - LARGEST MOTOR, M - MOTOR, E - EQUIPMENT, KE - KITCHEN EQUIPMENT, S - SUBFEED	
TOTAL CONNECTED LOADS		PANEL (FEEDER) DEMAND LOAD CALCULATIONS	
PHASE A	PHASE B	PHASE C	PANEL
9,859	9,887	9,786	29,534
RECEPTACLE		CONTINUOUS (L OR H)	
82		0 x 1.25 = 0 VA	
PHASE BALANCING (BASED ON CONNECTED LOADS ABOVE)			
FIRST 10,000 VA:		10,000 x 1.00 = 10,000 VA	
ADDITIONAL VA:		490 x 0.50 = 245 VA	
TOTAL DEMANDED LOADS		10,245 VA	
LARGEST MOTOR		4,774 x 1.25 = 5,968 VA	
MOTOR		1,280 x 1.00 = 1,280 VA	
EQUIPMENT		12,970 x 1.00 = 12,970 VA	
KITCHEN EQUIPMENT		0 x 1.00 = 0 VA	
PIECES OF EQUIPMENT: 0			
SUBFEED		0 x 1.00 = 0 VA	
TOTAL A		9,859	
TOTAL B		9,887	
TOTAL C		9,786	

PANEL L2A		PROJECT: Fruta Community Center		JOB NUMBER: 29005.00		17-Sep-03					
LOCATION: ELEC 206		COMMENTS:									
FED FROM: H2A VIA T2A											
VOLTAGE L-L: 208 V		BUS RATING: 250 AMPS		O.C. PROTECTION: 250 A/3P M.C.B.							
VOLTAGE L-G: 120 V		O.C. PROTECTION: 10,000 A.I.C. FULLY RATED									
TYPE: 3PH/4W											
MOUNTING: SURFACE											
CIR NO.	CIRCUIT BREAKER	LOAD VA	LOAD TYPE	LOAD SERVED	BUS	LOAD SERVED	LOAD TYPE	LOAD VA	LOAD POLES	RATING	CIR NO.
1	20	1	1940	E	R-ELEC, JAN, ROOF, PIT, EF-8	A	M-DIVIDER CURTAIN	LM	1176	1	20
3	20	1	360	R	R-TELE/COM	B	M-BACKBOARD	M	1176	1	20
5	20	1	360	R	R-TELE/COM	C	M-BACKBOARD	M	1176	1	20
7	20	1	180	R	R-ELEV MACHINE	A	M-BACKBOARD	M	1176	1	20
9	20	1	900	L	L-ELEVATOR CAB LTG	B	M-BACKBOARD	M	1176	1	20
11	20	1	900	E	E-ELEVATOR CAB POWER	C	M-BACKBOARD	M	1176	1	20
13	20	1	1000	R	R-SOUND SYSTEM	A	M-BACKBOARD	M	1176	1	20
15	20	1	1440	R	R-GROUP STUDIO, ROOF	B	R-TV'S	E	1250	1	20
17	20	1	1540	E	R-GROUP TRACK	C	R-NEST ROOF	R	720	1	20
19	20	1	612	A	R-EXERCISE	A	R-EXERCISE	E	1500	1	20
21	20	1	970	E	R-TRACK, ROOF	B	R-EXERCISE	E	1500	1	20
23	20	1	300	E	E-RELAY PANELS	C	R-EXERCISE	E	1500	1	20
25	20	1	192	M	EF-6, 7	A	R-EXERCISE	E	1500	1	20
27	20	1	100	E	RELAY PANEL	B	R-EXERCISE	E	1500	1	20
29	20	1	696	M	EF-10	C	R-EXERCISE	E	1500	1	20
31	20	1	192	M	EF-9, EF-12	A	R-EXERCISE	E	1500	1	20
33	20	1	696	M	EF-2	B	R-EXERCISE	E	1500	1	20
35	20	1	192	M	EF-5, EF-11	C	R-EXERCISE	E	1500	1	20
37	20	1	1500	E	E-WINDOW SHADES	A	R-EXERCISE	E	1500	1	20
39	20	1	790	E	E-TRACK	C	R-EXERCISE	E	1500	1	20
41	20	1	1000	E	SPARE	A	R-EXERCISE	E	1500	1	20
43	20	1	1000	E	SPARE	B	R-EXERCISE	E	1500	1	20
45	20	1	800	E	E-WINDOW SHADES	C	R-EXERCISE	E	1500	1	20
47	20	1	1798	M	CU-2	A	ELEVATOR RELAY	E	200	1	20
49	35	2	1798	M	CU-3	C	SPARE	SPARE	SPARE	1	20
51	20	1	1798	M	CU-4	A	SPARE	SP			

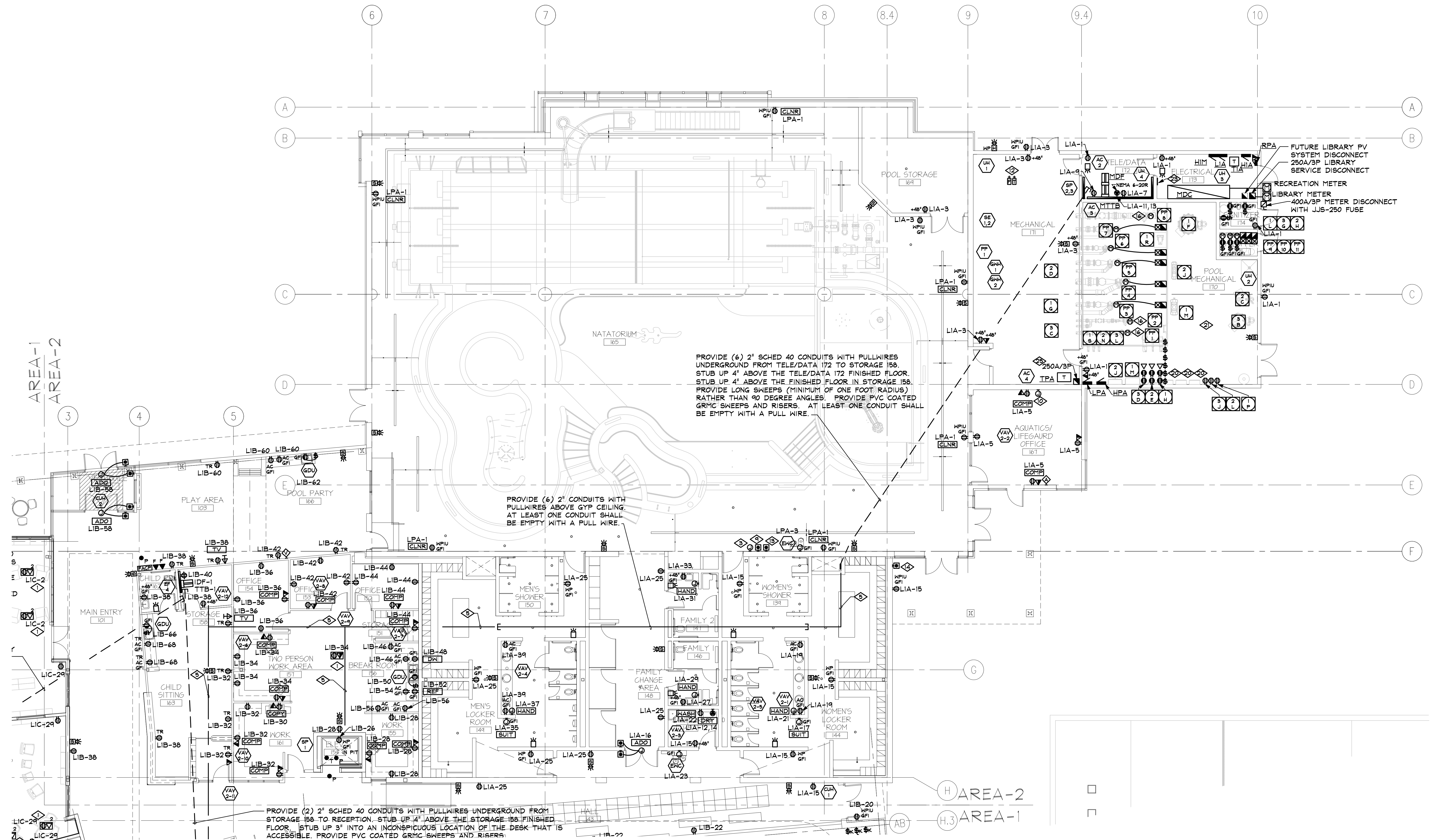


**SISK COMBS DETHLEFS**

A Professional Corporation 475 Lincoln Street, Suite 100 Denver, Colorado 80203 303.308.0200 FAX 303.022.1111



**innovative electrical systems, inc.**  
7550 W. Yale Ave., B-130 Denver, Co 80227 303.988.9305 303.984.8603 fax ies@iesystems-inc.com

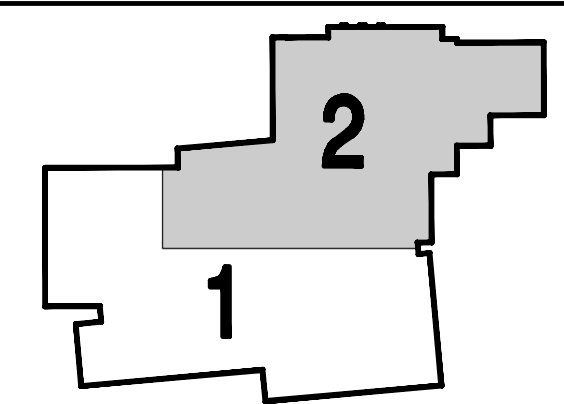


PROVIDE (6) 2" SCHED 40 CONDUITS WITH PULLWIRES UNDERGROUND FROM TELE/DATA 172 TO STORAGE 158. STUB UP 4" ABOVE THE FINISHED FLOOR IN STORAGE 158. PROVIDE LONG SNEEPS (MINIMUM OF ONE FOOT RADIUS) RATHER THAN 90 DEGREE ANGLES. PROVIDE PVC COATED GRMC SNEEPS AND RISERS. AT LEAST ONE CONDUIT SHALL BE EMPTY WITH A PULL WIRE.

PROVIDE (6) 2" CONDUITS WITH PULLWIRES ABOVE GYP CEILING. AT LEAST ONE CONDUIT SHALL BE EMPTY WITH A PULL WIRE.

PROVIDE (2) 2" SCHED 40 CONDUITS WITH PULLWIRES UNDERGROUND FROM STORAGE 158 TO RECEPTION. STUB UP 4" ABOVE THE STORAGE 158 FINISHED FLOOR. STUB UP 3" INTO AN INCONSPICUOUS LOCATION OF THE DESK THAT IS ACCESSIBLE. PROVIDE PVC COATED GRMC SNEEPS AND RISERS.

**KEY PLAN**



Issues/Revisions:	Date:
SCHEMATIC DESIGN	04-13-04
DESIGN DEVELOPMENT	07-10-04
90% CD'S	04-07-04
CONSTRUCTION DOCUMENTS	04-22-04

**LOWER LEVEL POWER & SYSTEMS PLAN AREA 2**  
E2.12 1/8"=1'-0"

- DETAIL NOTES**
- ◇ PROVIDE RECESSED FLOOR BOX HUBBELL #FFER62 WITH TWO #53017G FLANGES. PROVIDE #53823 AND #53826 COVER PLATES.
  - ◇ PROVIDE RECESSED FLOOR BOX HUBBELL #FFER63 WITH THREE #53017G FLANGES. PROVIDE TWO #53825 AND ONE #53826 COVER PLATES.
  - ◇ PROVIDE A 15 MINUTE TIMER FOR THE SPA HYDROTHERAPY PUMP. THE SWITCH SHALL BE INTERMATIC DPST #FD415M. VERIFY WITH SPA PROVIDER PRIOR TO ROUGH-IN.
  - ◇ MOUNT TRANSFORMER FROM CEILING. REFER TO DETAIL 2 ON SHEET E1.40.
  - ◇ PROVIDE J-HOOKS AS REQUIRED FOR TELECOMMUNICATIONS, FIRE ALARM AND SECURITY CABLES. COORDINATE CABLE RUNS WITH FIRE ALARM SUBCONTRACTOR AND SECURITY SUB CONTRACTOR.
  - ◇ PROVIDE TELECOMMUNICATIONS CABLING UNDERGROUND FOR THE FREE STANDING RECEPTION DESK. UTILIZE CONDUIT STUBBED UNDER DESK THAT IS ROUTED TO STORAGE 158.
  - ◇ PROVIDE TELECOMMUNICATIONS CABLING UNDERGROUND FOR ALL DEVICES SHOWN IN THE LIBRARY.

- DETAIL NOTES**
- ◇ PROVIDE FAN CONTROL FOR GYMNASIUM FAN AT RECEPTION DESK. COORDINATE FAN CONTROLS AND CIRCUITING WITH MANUFACTURERS INSTALLATION INSTRUCTIONS.
  - ◇ PROVIDE NEMA 4X RED MUSHROOM HEAD MAINTAINED-CONTACT, NORMALLY CLOSED EPO PUSHBUTTON WITH COVER. FLUSH-MOUNTED. EPO SWITCH IS TO SHUT DOWN THE SPA PUMPS (PP-2, PP-3). LABEL AS "SPA EMERGENCY POWER OFF". MOUNT SWITCH AT STANDARD SWITCH HEIGHT.
  - ◇ PROVIDE PATHWAY FROM MOTOR CONTROL CENTER TO THIS LOCATION FOR REMOTE START/STOP STATION. STATION SHALL BE FOR ALL FEATURE PUMPS (PP-4 THRU PP-7).
  - ◇ COORDINATE MOUNTING HEIGHT WITH ARCHITECT PRIOR TO ROUGH-IN.
  - ◇ PROVIDE QUANTITY OF TAMPER AND FLOW SWITCHES SHOWN ON THE PLUMBING DRAWINGS.
  - ◇ PROVIDE NEMA 4X RED MUSHROOM HEAD MAINTAINED-CONTACT, NORMALLY CLOSED EPO PUSHBUTTON WITH COVER. FLUSH-MOUNTED. EPO SWITCH IS TO SHUT DOWN THE POOL PUMPS (PP-4 THRU PP-8). LABEL AS "POOL EMERGENCY POWER OFF". MOUNT SWITCH AT STANDARD SWITCH HEIGHT.

- DETAIL NOTES**
- ◇ PROVIDE NEMA 4X RED MUSHROOM HEAD MAINTAINED-CONTACT, NORMALLY CLOSED EPO PUSHBUTTON WITH COVER. FLUSH-MOUNTED. EPO SWITCH IS TO SHUT DOWN THE OUTDOOR POOL PUMP (PP-1). LABEL AS "POOL EMERGENCY POWER OFF". MOUNT SWITCH AT STANDARD SWITCH HEIGHT.
  - ◇ PROVIDE DOOR BUZZER AND CONNECTION FROM THIS LOCATION TO THE FRONT DESK. PROVIDE NUTONE #LAS2XH WITH #5909 TRANSFORMER OR EQUAL.
  - ◇ DISCONNECT AND STARTER PROVIDED IN THE SPCS CONTROLLER FOR THIS PUMP. REFER TO POOL DRAWINGS FOR CONTROLLER LOCATION.
  - ◇ PROVIDE 1" CONDUIT ABOVE CEILING LEVEL FOR FUTURE LOW VOLTAGE CABLE. PROVIDE PULLSTRING IN CONDUIT.
  - ◇ PROVIDE A 4-GANG DEEP JUNCTION BOX. STUB (2) 1" CONDUITS FROM THIS BOX UP TO 6" ABOVE ACCESSIBLE CEILING. BOX AND PATHWAY FOR FUTURE PROJECTOR CONNECTIONS AND INTERFACES.
  - ◇ PROVIDE RECEPTACLE, DATA AND TV OUTLET FLUSH WITH CEILING. SUPPORT BOXES FROM STRUCTURE ABOVE THE ACCESSIBLE CEILING.
  - ◇ LOCATION OF PUMP CONTROLLERS.
  - ◇ PROVIDE GFI RECEPTACLES FOR ALL RECEPTACLES IN THE POOL MECHANICAL ROOM.

- DETAIL NOTES**
- ◇ PROVIDE KEY SWITCH TO CONTROL WINDOW SHADES FOR WINDOWS IN THE GYMNASIUM. REFER TO SECOND FLOOR POWER PLAN FOR WINDOW LOCATIONS.
  - ◇ PROVIDE (6) 2" CONDUITS FOR PV SYSTEM. STUB THREE TO NATATORIUM ROOF AND THREE TO LIBRARY ROOF. CAP BOTH ENDS OF CONDUIT AND PROVIDE PULL STRING IN CONDUIT.
  - ◇ PROVIDE GFI RECEPTACLES IN KITCHEN PER NEC 210.8.B.2
  - ◇ PROVIDE 250A/3P DISCONNECT FOR TRANSFORMER TPA SECONDARY FEED.

**FRUITA COMMUNITY CENTER & MESA COUNTY LIBRARIES/FRUITA BRANCH**

FRUITA COLORADO

SCD Project No.: 0401

**LOWER LEVEL POWER & SYSTEMS PLAN, AREA 2**

Drawn by: KLY  
Checked by: CMP

**E2.12**

All information appearing herein shall not be applied, discharged or otherwise used without the written consent of Sisk Combs Dethlefs.



**SISK COMBS DETHLEFS**

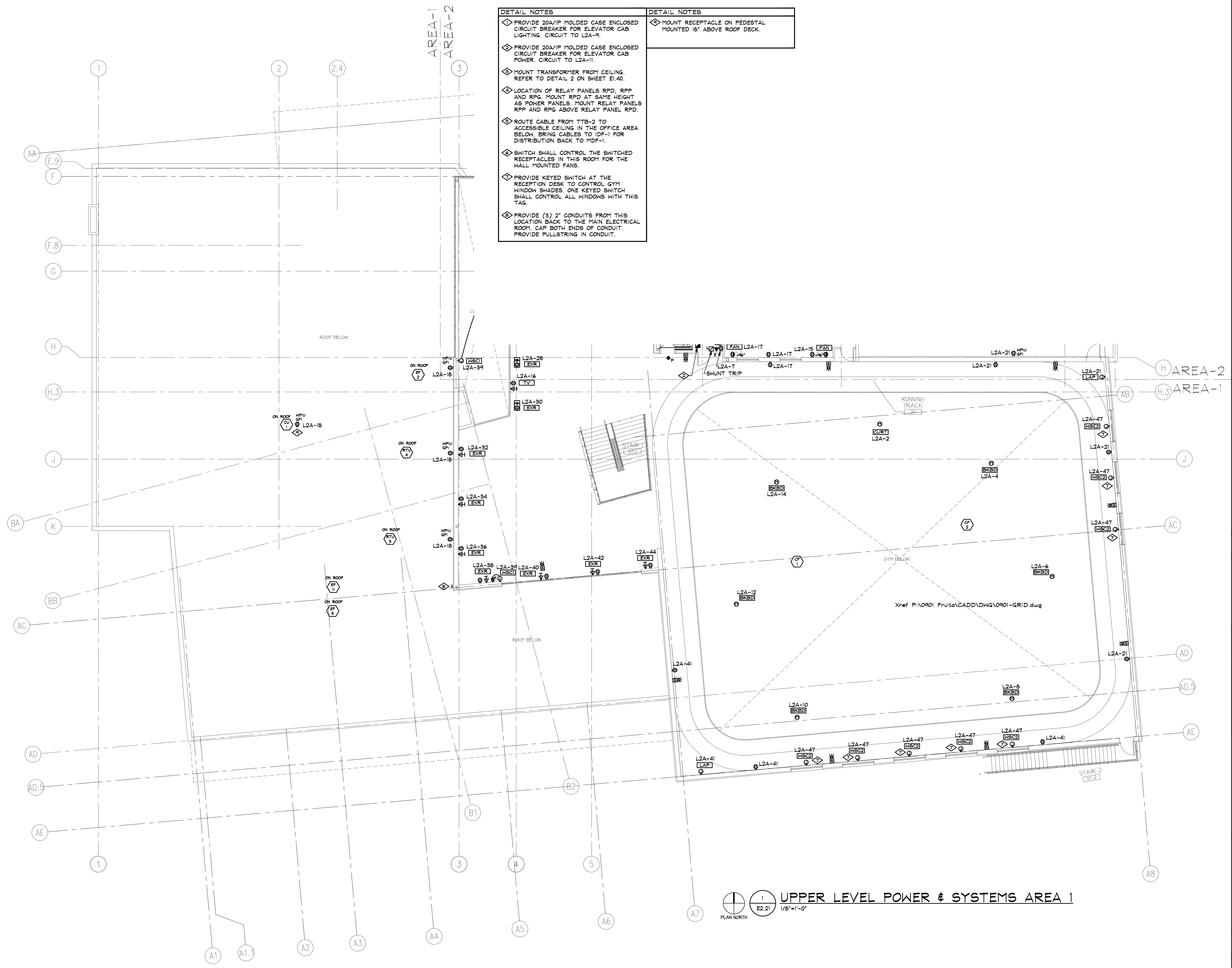
A Professional Corporation 475 Lincoln Street, Suite 100 Denver, Colorado 80203 303.308.0200 303.988.9305 303.984.8603 Fax ies@iesystems-inc.com



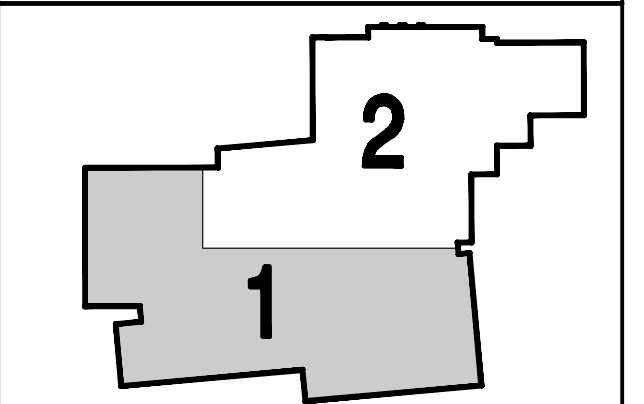
7550 W. Yale Ave., B-130 Denver, Co 80227 303.988.9305 303.984.8603 Fax ies@iesystems-inc.com

- DETAIL NOTES**
- ◇ PROVIDE 20A/1P MOLDED CASE ENCLOSED CIRCUIT BREAKER FOR ELEVATOR CAB LIGHTING. CIRCUIT TO L2A-9.
  - ◇ PROVIDE 20A/1P MOLDED CASE ENCLOSED CIRCUIT BREAKER FOR ELEVATOR CAB POWER. CIRCUIT TO L2A-11.
  - ◇ MOUNT TRANSFORMER FROM CEILING. REFER TO DETAIL 2 ON SHEET EI.40.
  - ◇ LOCATION OF RELAY PANELS RPD, RPP AND RPG. MOUNT RPD AT SAME HEIGHT AS POWER PANELS. MOUNT RELAY PANELS RPP AND RPG ABOVE RELAY PANEL RPD.
  - ◇ ROUTE CABLE FROM TTB-2 TO ACCESSIBLE CEILING IN THE OFFICE AREA BELOW. BRING CABLES TO IDF-1 FOR DISTRIBUTION BACK TO MDF-1.
  - ◇ SWITCH SHALL CONTROL THE SWITCHED RECEPTACLES IN THIS ROOM FOR THE WALL MOUNTED FANS.
  - ◇ PROVIDE KEYED SWITCH AT THE RECEPTION DESK TO CONTROL GYM WINDOW SHADES. ONE KEYED SWITCH SHALL CONTROL ALL WINDOWS WITH THIS TAG.
  - ◇ PROVIDE (3) 2" CONDUITS FROM THIS LOCATION BACK TO THE MAIN ELECTRICAL ROOM. CAP BOTH ENDS OF CONDUIT. PROVIDE PULLSTRING IN CONDUIT.

- DETAIL NOTES**
- ◇ MOUNT RECEPTACLE ON PEDESTAL MOUNTED 18" ABOVE ROOF DECK.



**KEY PLAN**



Issues/Revisions:	Date:
SCHEMATIC DESIGN	04-13-04
DESIGN DEVELOPMENT	07-10-04
90% CDS	04-01-04
CONSTRUCTION DOCUMENTS	04-22-04

**FRUITA COMMUNITY CENTER & MESA COUNTY LIBRARIES/ FRUITA BRANCH**

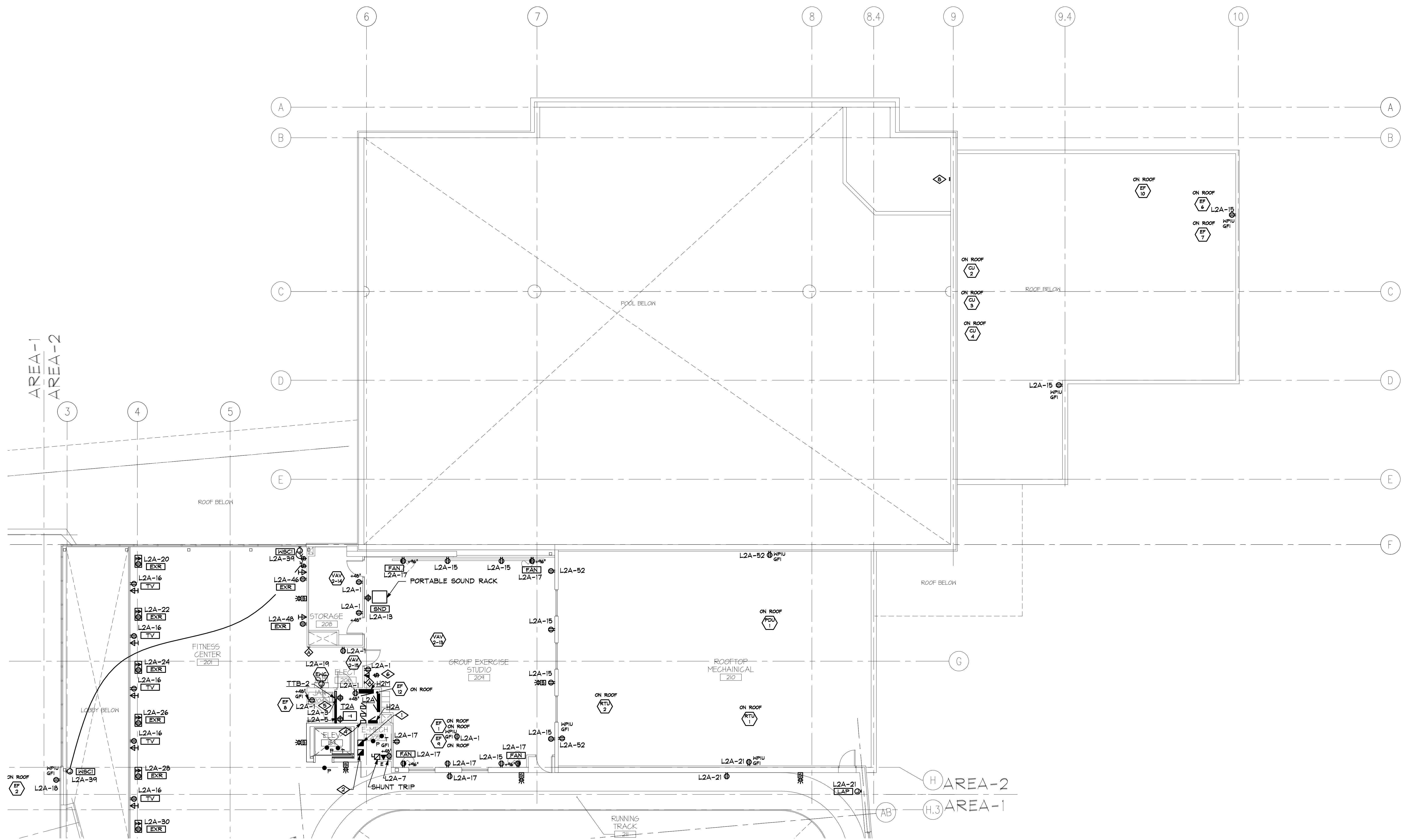
FRUITA COLORADO

SCD Project No.: 0401

**UPPER LEVEL POWER & SYSTEMS PLAN, AREA 1**

Drawn by: KLY  
Checked by: CMP

**E2.21**



1 UPPER LEVEL POWER & SYSTEMS AREA 2  
 E2.22 1/8"=1'-0"  
 PLAN NORTH

DETAIL NOTES	DETAIL NOTES
<ul style="list-style-type: none"> <li>◇ PROVIDE 20A/1P MOLDED CASE ENCLOSED CIRCUIT BREAKER FOR ELEVATOR CAB LIGHTING. CIRCUIT TO L2A-9.</li> <li>◇ PROVIDE 20A/1P MOLDED CASE ENCLOSED CIRCUIT BREAKER FOR ELEVATOR CAB POWER. CIRCUIT TO L2A-11.</li> <li>◇ MOUNT TRANSFORMER FROM CEILING. REFER TO DETAIL 2 ON SHEET EI.40.</li> <li>◇ LOCATION OF RELAY PANELS RPD, RPP AND RFG. MOUNT RPD AT SAME HEIGHT AS POWER PANELS. MOUNT RELAY PANELS RPP AND RFG ABOVE RELAY PANEL RPD.</li> <li>◇ ROUTE CABLE FROM ITB-2 TO ACCESSIBLE CEILING IN THE OFFICE AREA BELOW. BRING CABLES TO IDF-1 FOR DISTRIBUTION BACK TO MDF-1.</li> <li>◇ SWITCH SHALL CONTROL THE SWITCHED RECEPTACLES IN THIS ROOM FOR THE WALL MOUNTED FANS.</li> <li>◇ PROVIDE KEYED SWITCH AT THE RECEPTION DESK TO CONTROL GYM WINDOW SHADES. ONE KEYED SWITCH SHALL CONTROL ALL WINDOWS WITH THIS TAG.</li> <li>◇ PROVIDE (3) 2" CONDUITS FROM THIS LOCATION BACK TO THE MAIN ELECTRICAL ROOM. CAP BOTH ENDS OF CONDUIT. PROVIDE PULLSTRING IN CONDUIT.</li> </ul>	<ul style="list-style-type: none"> <li>◇ MOUNT RECEPTACLE ON PEDESTAL MOUNTED 18" ABOVE ROOF DECK.</li> </ul>

All information appearing herein shall not be duplicated, discharged or otherwise used without the written consent of Sink Combs Dethlefs.



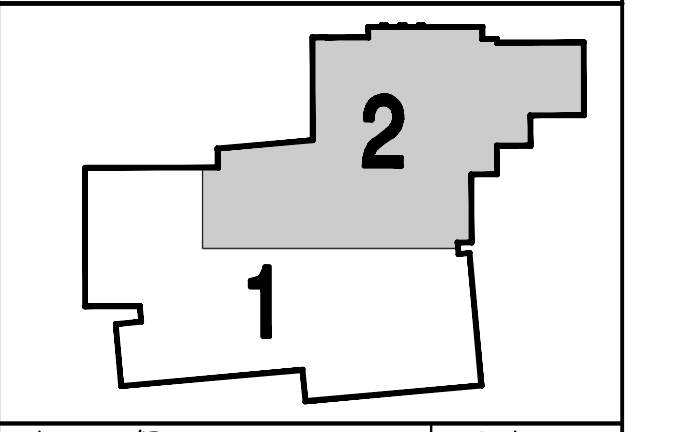
**SINK COMBS DETHLEFS**

A Professional Corporation 475 Lincoln Street, Suite 100 Denver, Colorado 80203 303.308.0200 FAX 303.308.0222



7550 W. Yale Ave., B-130 Denver, Co 80227 303.988.9305 303.984.8603 fax ies@iesystems-inc.com

**KEY PLAN**



Issues/Revisions:	Date:
SCHEMATIC DESIGN	04-13-04
DESIGN DEVELOPMENT	07-10-04
90% CDS	04-07-04
CONSTRUCTION DOCUMENTS	04-22-04

**FRUITA COMMUNITY CENTER & MESA COUNTY LIBRARIES/ FRUITA BRANCH**

FRUITA COLORADO

SCD Project No.: 0401

**SECOND FLOOR POWER & SYSTEMS PLAN, AREA 2**

Drawn by: KLY  
 Checked by: CMP

**E2.22**