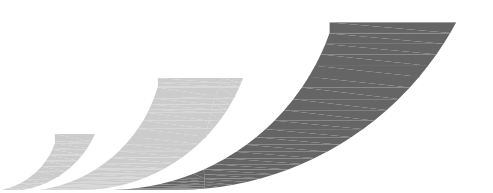
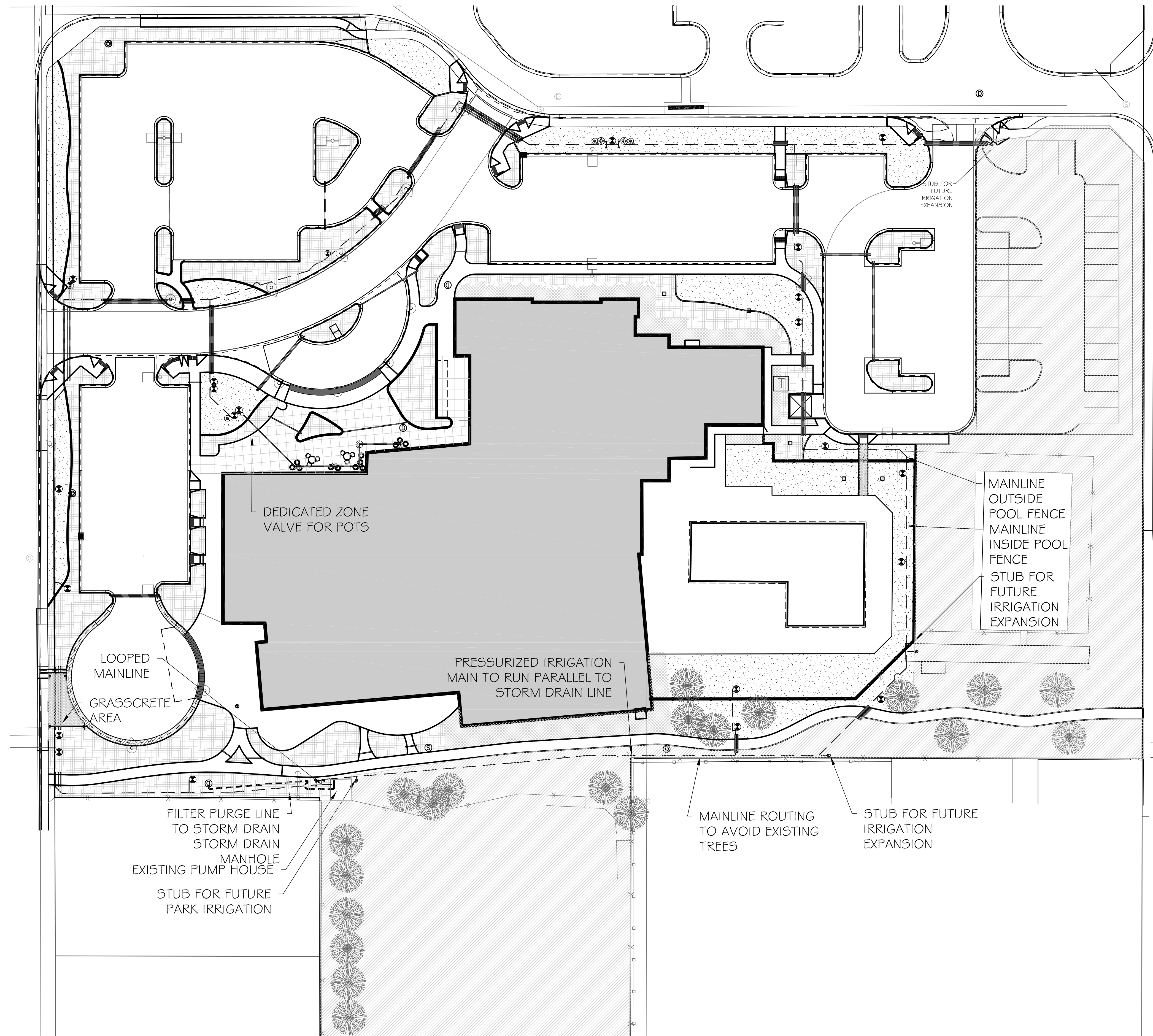


**SINK COMBS DETHLEFS**

A Professional Corporation 475 Lincoln Street, Suite 100 Denver, Colorado 80203 303.308.0200 FAX 303.308.0222

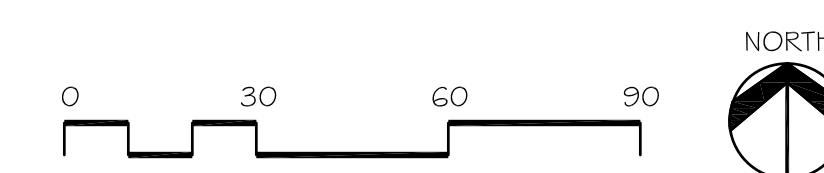
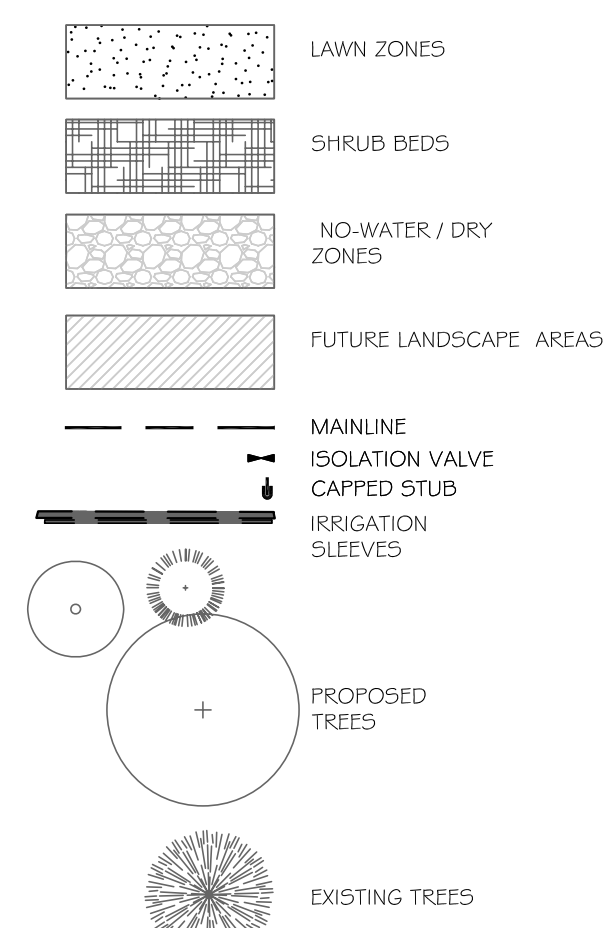


CLAVONNE, ROBERTS & ASSOCIATES, INC.  
LAND PLANNING AND  
LANDSCAPE ARCHITECTURE  
222 N. 7TH STREET  
GRAND JUNCTION, CO 81501  
970.241.0745 P  
970.241.0765 F  
www.clavonne.com

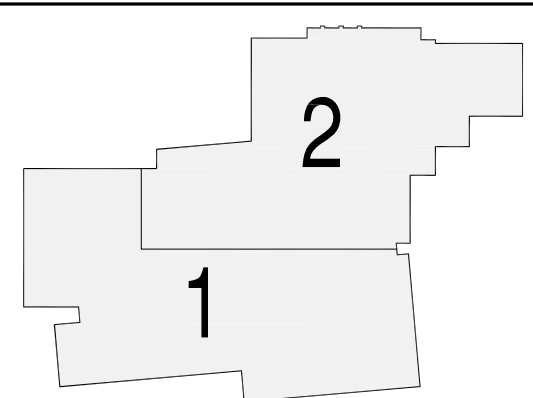


- IRRIGATION PROGRAMMING**
1. PUMP & FILTRATION
    - IRRIGATION SYSTEM TO USE EXISTING MUNRO 5 HP HIGH HEAD PUMP, OR NEW PUMP AS PROVIDED BY OWNER.
    - EXISTING PRE-PUMP SCREEN TO REMAIN
    - NEW POST PUMP FILTRATION: AS DESIGNED BY OWNER / OWNER'S VENDOR.
    - FILTRATION LEVELS TO BE ADEQUATE FOR SPRINKLER PRODUCTS SELECTED. MINIMUM FILTRATION LEVEL TO BE 100 MESH FOR THESE PRODUCTS.
    - FILTER PURGE WATER TO BE DISCHARGED VIA PIPE TO STORM DRAIN CATCH BASIN.
  2. MAINLINE
    - SYSTEM TO BE A LOOPED DESIGN. MAINLINE ROUTE SHOWN IS GRAPHIC ONLY. MAINLINE SIZE IS 3".
    - ISOLATION VALVES TO ALLOW FOR APPROXIMATELY 1/2 OF THE SITE TO BE WATERED IN THE EVENT OF MAINLINE PROBLEMS
    - CAPPED STUBS PROVIDED FOR FUTURE EXPANSION
    - TWO AIR RELIEF VALVES, ONE EACH SIDE OF ISOLATION VALVES (HIGH POINT OF SITE)
  3. CONTROLLER
    - RAIN BIRD ESP-MC 3240
  4. ZONE VALVES
    - RAIN BIRD PESB WITH PRS-DIAL PRESSURE REGULATION
  5. HEADS & NOZZLES
    - SHRUB BEDS: RAIN BIRD 1806 OR 1812 SPRAY BODIES, DEPENDING ON LOCATION, WITH SPRAY NOZZLES
    - LAWN AREA: RAIN BIRD 1804 SPRAY BODY, WITH RAIN BIRD SPRAY OR ROTATOR NOZZLES DEPENDING ON LOCATION
  6. SPECIAL NOTES
    - DEDICATED ZONE FOR FUTURE POTS AT FRONT ENTRANCE / LIBRARY. NO POTS TO BE INSTALLED AT THIS TIME.

**LEGEND**



**KEY PLAN**



Issues/Revisions:	Date:
SCHEMATIC DESIGN	04-13-09
DESIGN DEVELOPMENT	07-10-09
90% COORDINATION SET	09-03-09
CONSTRUCTION DOCUMENTS	09-22-09
FINAL CD'S	11-04-09
ADDENDUM 1	11-12-09

**FRUITA COMMUNITY CENTER & MESA COUNTY LIBRARIES / FRUITA BRANCH**

FRUITA COLORADO

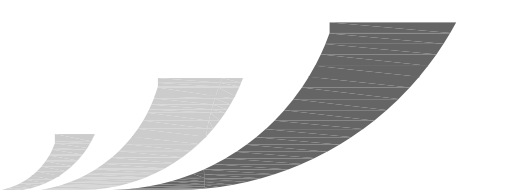
SCD Project No.: 0901

**IRRIGATION OVERVIEW**

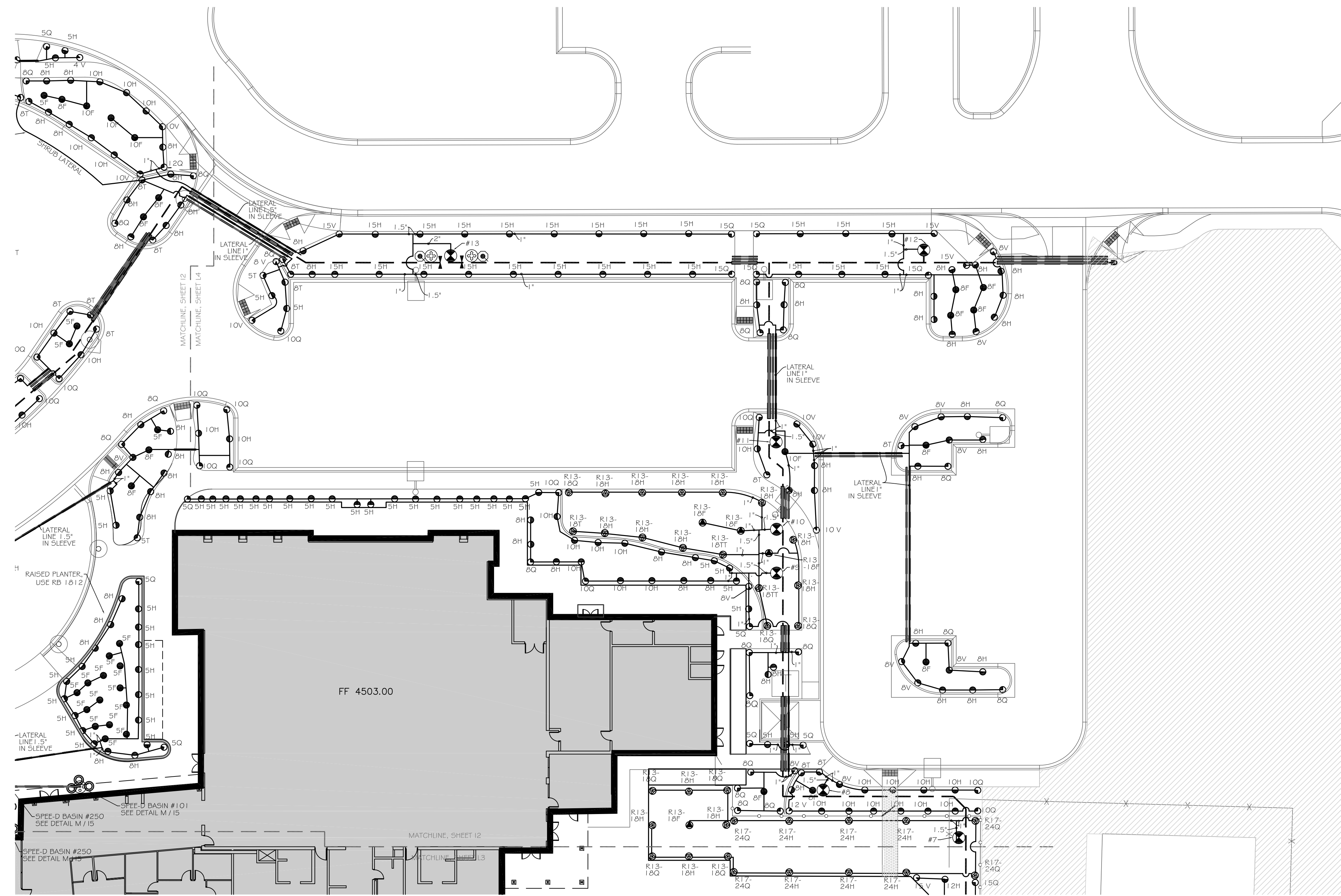
Drawn by: DCM  
Checked by: MH

**SINK COMBS DETHLEFS**

A Professional Corporation 475 Lincoln Street, Suite 100 Denver, Colorado 80203 303.338.0200 FAX 303.338.0222



CLAVONNE, ROBERTS & ASSOCIATES, INC.  
LAND PLANNING AND  
LANDSCAPE ARCHITECTURE  
222 N. 7TH STREET  
GRAND JUNCTION, CO 81501  
970.241.0745 P  
970.241.0765 F  
www.clavonne.com



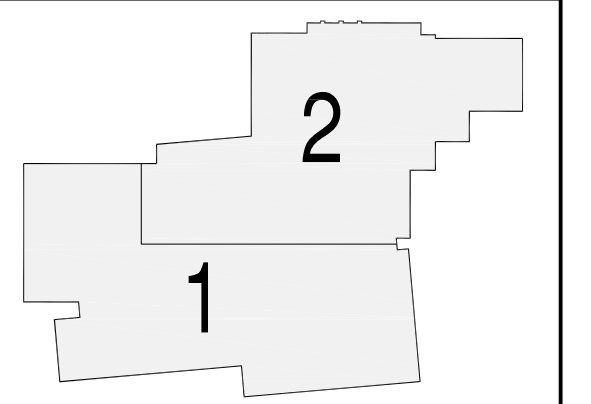
**IRRIGATION LEGEND**

- RAINBIRD 1600 SPRAY HEADS & NOZZLES. NOZZLES AS SHOWN ON PLAN.
- 1.004 IN TURF
- 1.006 IN SHRUB BEDS
- 1.012 IN RAISED PLANTERS (FRONT ENTRY)
- RAINBIRD 1604 SPRAY BODY & ROTARY NOZZLES. NOZZLES 1.3-1.8 HALF UNLESS OTHERWISE SHOWN ON PLAN.
- ⊖ ISOLATION GATE VALVE
- ⊕ MANUAL DRAIN VALVE
- ⊙ ZONE VALVE
- ⊙ DRIP FILTER
- ⊙ QUICK COUPLER
- ⊙ AIR RELIEF VALVE
- ⊙ CONNECTION FOR ENTRY POT WATERING
- CLASS 200 PVC MAINLINE, 3 INCH UNLESS OTHERWISE NOTED
- CLASS 200 PVC LATERAL PIPE, SIZE AS SHOWN
- 80 PSI POLY PIPE LATERAL, SIZE AS SHOWN
- FILTER PURGE LINE
- CLASS 200 6" PVC IRRIGATION SLEEVE
- CLASS 200 4" PVC IRRIGATION SLEEVE
- 1" PIPE SIZE
- EXISTING TREES

**IRRIGATION NOTES:**

1. ALL WORK SHALL BE PER EXISTING COUNTY OR STATE CODE AND IS SUBJECT TO INSPECTION AND APPROVAL BY APPROPRIATE INSPECTORS AND THE OWNER'S REPRESENTATIVE.
2. CONTRACTOR TO VERIFY LOCATION AND ELEVATION OF ALL EXISTING UTILITIES PRIOR TO CONSTRUCTION.
3. POWER TO IRRIGATION CONTROLLER TO BE PROVIDED BY LICENSED ELECTRICIAN.
4. ALL LATERAL AND MAIN LINES IN SYSTEM WILL BE CONTAINED IN SLEEVES WHEREVER CONCRETE IS TO BE OVERLAID.
5. CLOCK TO BE MOUNTED INSIDE EXISTING PUMP HOUSE.
6. MAXIMUM LENGTH OF SWING PIPE ON ALL HEADS SHALL BE 10 FT., MINIMUM LENGTH SHALL BE 2 FT.
7. ALL MAINS SHALL BE BURIED AT A MINIMUM DEPTH OF 24 IN. ALL LATERALS AT A DEPTH OF 18 IN. ALL VALVE WIRING SHALL BE BUNDLED BY TAPING AT 25 FT. INTERVALS AND PLACED BELOW IRRIGATION PIPING FOR PROTECTION.
8. CONTRACTOR TO INSTALL MANUAL DRAIN VALVES AT LOW POINT ON ALL MAIN LINES.
9. SEE SHEETS 1-5 FOR DETAILS.
10. SYSTEM IS DESIGN IS BASED ON USING EXISTING 5 HP MUNRO HIGH HEAD PUMP. ALL PRS DIAL UNITS TO BE ADJUSTED TO PROVIDE 30 PSI AT FARTHEST HEAD IN EACH ZONE. "DRIP ZONE" FOR FUTURE POTS TO BE ADJUSTED TO 30 PSI.
11. IRRIGATION DESIGN TO BE BASED ON OWNER INSTALLING A 100 MESH SELF-FLUSHING FILTER, CAPABLE OF FILTERING FLOWS. CONTRACTOR TO USE EXISTING 3" FLOOR SLEEVE FOR FILTER DISCHARGE.
12. CONTRACTOR TO INSTALL FILTER PURGE LINE AS SHOWN ON PLANS & CONNECT TO STORM SEWER LINE.
13. WHERE IRRIGATION IS TO BE LOCATED ADJACENT TO FENCING, LATERALS SHALL BE LOCATED 12 INCHES FROM BACK OF WALK AND 3 INCHES FROM FACE OF FENCE.
14. MAINLINE IS DIAGRAMMATIC. COORDINATE WITH LANDSCAPE PLANS SO MAINLINE IS NOT LOCATED UNDERNEATH TREES.
15. PIPE FROM CONTROL VALVE TO FIRST "TEE" TO USE 1/2" LARGER THAN VALVE UNLESS NOTED OTHERWISE.
16. PIPE SIZE NOTATION INDICATES MINIMUM PIPE SIZE DOWNSTREAM FROM THAT POINT.
17. SPRAY IRRIGATION IN SHRUB BEDS AT OWNER'S REQUEST. SHRUB IRRIGATION IS BASED ON LANDSCAPE PLAN, AND PROVIDING SHRUBS WITH SPRAY COVERAGE FROM AT LEAST 2 SPRINKLERS. THE SHRUB ZONES ARE NOT DESIGNED FOR TRADITIONAL HEAD TO HEAD COVERAGE. CONTRACTOR TO REVIEW LANDSCAPE PLANS BEFORE INSTALLING IRRIGATION. CHANGES IN THE LANDSCAPE PLANS AFFECTS HEAD PLACEMENT. CHANGES IN EITHER THE IRRIGATION OR SHRUB / PERENNIAL PLACEMENT REQUIRES OWNER NOTIFICATION AND APPROVAL.

**KEY PLAN**



Issues/Revisions:	Date:
SCHEMATIC DESIGN	04-13-09
DESIGN DEVELOPMENT	07-10-09
90% COORDINATION SET	09-07-09
CONSTRUCTION DOCUMENTS	09-22-09
FINAL CD'S	11-04-09

**FRUITA COMMUNITY CENTER & MESA COUNTY LIBRARIES / FRUITA BRANCH**

FRUITA COLORADO

SCD Project No.: 0901

**IRRIGATION NORTHEAST**

Drawn by: DCM  
Checked by: MH

VALVE SCHEDULE (FOR ESTABLISHED PLANTS)												
valve #	valve size	type	location	# of emitters	GPM	precip rate	time setting	in/ program	settings per day	water days	in/week	
1	1 1/2"	SHRUB SPRAY	TURNAROUND / S. SIDE	-	50.0	1.58 in/hr	11min.	B	0.29 in	3	3	2.09
2	1"	SHRUB SPRAY	SOUTH OF PATH	-	20.0	1.58 in/hr	11min.	B	0.29 in	3	3	2.09
3	1"	TURF ROTARY	SOUTH (OUTSIDE) OF POOL FENCE	-	11.6	.75 in/hr	31min.	A	0.39 in	3	3	2.96
4	1"	TURF ROTARY	SOUTH OF POOL (INSIDE)	-	13.8	.51 in/hr	46min.	A	0.39 in	3	3	2.99
5	1"	TURF SPRAY	S.E. (OUTSIDE) OF POOL FENCE	-	21.5	1.83 in/hr	14min.	A	0.43 in	3	3	3.07
6	1 1/2"	TURF SPRAY	E. (OUTSIDE) OF POOL FENCE	-	35.7	1.83 in/hr	14min.	A	0.43 in	3	3	3.07
7	1"	TURF ROTARY	NORTH OF POOL (INSIDE)	-	13.8	.82 in/hr	29min.	A	0.39 in	3	3	3.02
8	1"	TURF SPRAY	N. (OUTSIDE) OF POOL FENCE	-	12.6	1.58 in/hr	16min.	A	0.42 in	3	3	3.03
9	1"	SHRUB SPRAY	NORTH # EAST OF BUILDING	-	20.6	1.83 in/hr	10min.	B	0.31 in	3	3	2.20
10	1"	TURF ROTARY	NORTH # EAST OF BUILDING	-	16.7	.77 in/hr	31min.	A	0.40 in	3	3	3.06
11	1"	SHRUB SPRAY	NORTH # EAST PARKING LOT	-	19.0	1.83 in/hr	10min.	B	0.31 in	3	3	2.20
12	1"	TURF SPRAY	ENTRY DRIVE, FAR EAST TURF	-	22.4	1.58 in/hr	14min.	A	0.37 in	3	3	2.65
13	1 1/2"	TURF SPRAY	ENTRY DRIVE, EAST TURF	-	50.3	1.58 in/hr	16min.	A	0.42 in	3	3	3.03
14	1 1/2"	SHRUB SPRAY	NORTH PARKING LOT (INTERIOR)	-	36.4	1.83 in/hr	10min.	B	0.31 in	3	3	2.20
15	1 1/2"	SHRUB SPRAY	NORTH PARKING LOT (EXTERIOR)	-	50.2	1.83 in/hr	11min.	B	0.34 in	3	3	2.42
16	1 1/2"	TURF SPRAY	NORTH PARKING LOT (EXTERIOR)	-	29.2	1.83 in/hr	14min.	B	0.43 in	3	3	3.07
17	1 1/2"	TURF SPRAY	BLD. ENTRY AREA PARKING LOT	-	27.7	1.58 in/hr	16min.	B	0.42 in	3	3	3.03
18	1"	TURF SPRAY	BLD. ENTRY AREA PARKING LOT	-	15.6	1.83 in/hr	14min.	B	0.43 in	3	3	3.07
19	1"	ENTRY POTS	BLD. ENTRY (FUTURE POTS)	-	-	-	-	D	-	-	-	-
20	1"	TURF SPRAY	BLD. ENTRY AREA	-	24.4	1.58 in/hr	16min.	B	0.42 in	3	3	3.03
21	1 1/2"	TURF SPRAY	WEST PARKING LOT (EXTERIOR)	-	26.3	1.58 in/hr	16min.	B	0.42 in	3	3	3.03
22	1 1/2"	SHRUB SPRAY	WEST PARKING LOT (EXTERIOR)	-	29.8	1.83 in/hr	9min.	B	0.27 in	3	3	1.98
23	1"	TURF SPRAY	GRASS-CRETE DRIVE	-	6.1	1.58 in/hr	16min.	B	0.42 in	3	3	3.03
						APRIL	MAY	JUNE	JULY	AUG	SEPT	OCT
WATER BUDGET SETTINGS						90%	100%	130%	160%	120%	90%	70%

- NOTES:  
 1. THIS CHART PROVIDES WATERING SCHEDULE RECOMMENDATIONS FOR ESTABLISHED PLANTS AND TURF.  
 2. CONTRACTOR IS OBLIGATED TO MONITOR SOIL MOISTURE TO AVOID SATURATION OR DROUGHT AND ADJUST SCHEDULE ACCORDINGLY DURING ESTABLISHMENT PERIOD.  
 3. TURF & SHRUB SPRAY ZONES ARE CALCULATED TO 80% EFFICIENCY. TURF ROTARY ZONES ARE CALCULATED TO 85% EFFICIENCY.  
 4. OPTIMUM PRESSURE FOR ZONES: 30 PSI AT FARTHEST HEAD