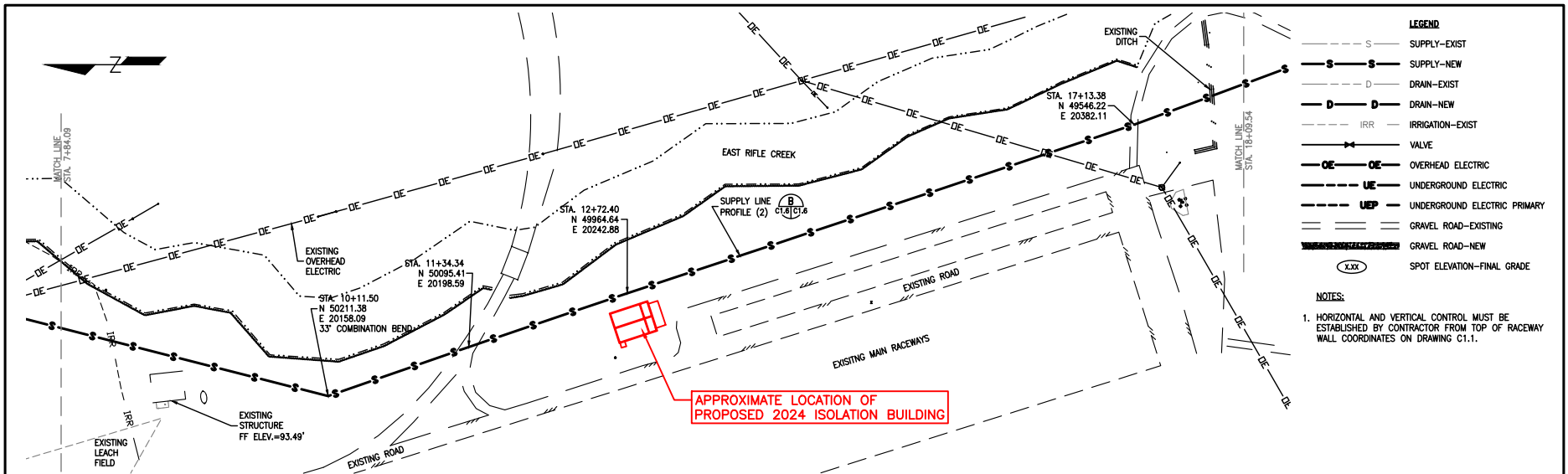


APPENDIX B - 2021 ISOLATION BUILDING SUPPLY ALIGNMENT

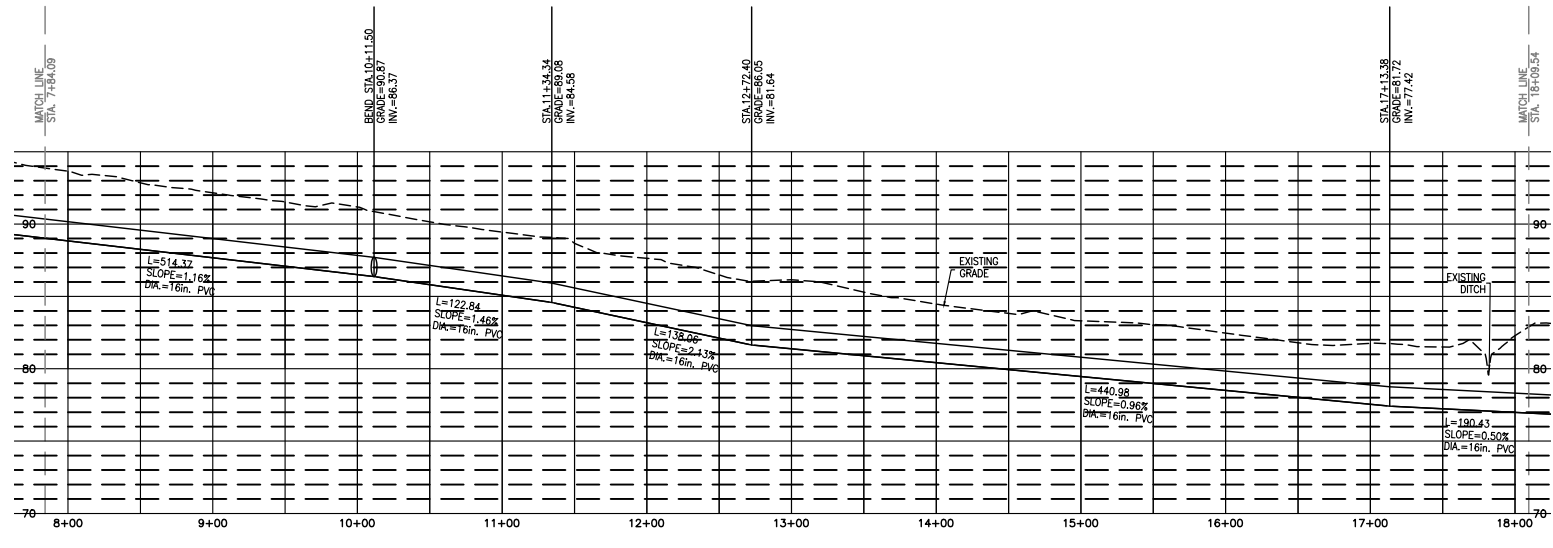
Rifle Falls SFU - Isolation Building
SCA23A



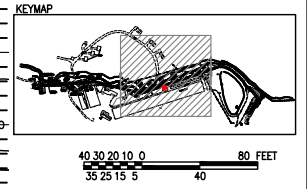
LEGEND

---	S	SUPPLY-EXIST
—●—	S	SUPPLY-NEW
---	D	DRAIN-EXIST
—●—	D	DRAIN-NEW
---	IRR	IRRIGATION-EXIST
+		VALVE
---○---	OE	OVERHEAD ELECTRIC
---	UE	UNDERGROUND ELECTRIC
---	UEP	UNDERGROUND ELECTRIC PRIMARY
---		GRAVEL ROAD-EXISTING
---		GRAVEL ROAD-NEW
xxx		SPOT ELEVATION-FINAL GRADE

NOTES:
 1. HORIZONTAL AND VERTICAL CONTROL MUST BE ESTABLISHED BY CONTRACTOR FROM TOP OF RACEWAY WALL COORDINATES ON DRAWING C1.1.



Ⓟ C1.6/C1.6 SUPPLY LINE PROFILE (2)
 SCALE: SEE BAR SCALE



STATE OF COLORADO DEPARTMENT OF NATURAL RESOURCES DIVISION OF WILDLIFE DENVER, COLORADO	
RIFLE FALLS HATCHERY IMPROVEMENTS ISOLATION BUILDING SUPPLY LINE PLAN/PROF. (2)	
DESIGNED BY HRR	DATE 10/27/09
DRAWN BY HRR	APPROVED BY
CHECKED BY HB	APPROVED BY
DRAWING NUMBER R-C1.6	CHEF ENGINEER
SHEET . . . 7 . . . OF . . . 23 . . .	

- NOTES:**
- THIS IS A PORTION OF THE 2001 ISOLATION BUILDING PROJECT BID DOCUMENTS, INTENDING TO SHOW THE APPROXIMATE ALIGNMENT OF THE EXISTING 16" PVC ISOLATION BUILDING SUPPLY LINE
 - THE ALIGNMENT WAS INTENDED FOR ADVERTISEMENT PURPOSES ONLY, AND MAY NOT MATCH FIELD CONDITIONS
 - ELEVATIONS CORRESPOND WITH THE 2024 ISOLATION BUILDING SITE PLAN WITH A 12.15' OFFSET